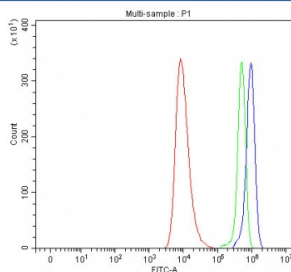


SEMA7A Antibody / Semaphorin 7A (RQ7621)

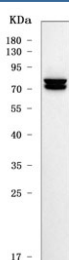
Catalog No.	Formulation	Size
RQ7621	0.5mg/ml if reconstituted with 0.2ml sterile DI water	100 ug

[Bulk quote request](#)

Availability	1-3 business days
Species Reactivity	Human
Format	Antigen affinity purified
Host	Rabbit
Clonality	Polyclonal (rabbit origin)
Isotype	Rabbit IgG
Purity	Antigen affinity purified
Buffer	Lyophilized from 1X PBS with 2% Trehalose
UniProt	O75326
Applications	Western Blot : 0.5-1ug/ml Flow Cytometry : 1-3ug/million cells Direct ELISA : 0.1-0.5ug/ml
Limitations	This SEMA7A antibody is available for research use only.



Flow cytometry testing of human HEL cells with SEMA7A antibody at 1ug/million cells (blocked with goat sera); Red=cells alone, Green=isotype control, Blue= SEMA7A antibody.



Western blot testing of human U-251 cell lysate with SEMA7A antibody. Predicted molecular weight ~73 kDa and 75 kDa (two isoforms).

Description

Semaphorin 7A, GPI membrane anchor (John Milton Hagen blood group) (SEMA7A) also known as CD108 (Cluster of Differentiation 108), is a human gene. This gene encodes a member of the semaphorin family of proteins. The encoded preproprotein is proteolytically processed to generate the mature glycosylphosphatidylinositol (GPI)-anchored membrane glycoprotein. The encoded protein is found on activated lymphocytes and erythrocytes and may be involved in immunomodulatory and neuronal processes. The encoded protein carries the John Milton Hagen (JMH) blood group antigens. Mutations in this gene may be associated with reduced bone mineral density (BMD). Alternative splicing results in multiple transcript variants, at least one of which encodes an isoform that is proteolytically processed.

Application Notes

Optimal dilution of the SEMA7A antibody should be determined by the researcher.

Immunogen

E. coli-derived recombinant human protein (amino acids E273-H572) was used as the immunogen for the SEMA7A antibody.

Storage

After reconstitution, the SEMA7A antibody can be stored for up to one month at 4oC. For long-term, aliquot and store at -20oC. Avoid repeated freezing and thawing.