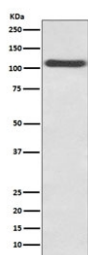


## SELP Antibody / CD62P / P-Selectin [clone AAEC-19] (RQ5466)

Catalog No.	Formulation	Size
RQ5466	Antibody in PBS with 0.02% sodium azide, 50% glycerol and 0.4-0.5mg/ml BSA	100 ul

[Bulk quote request](#)

Availability	1-2 weeks
Species Reactivity	Human
Format	Purified
Clonality	Rabbit Monoclonal
Isotype	Rabbit IgG
Clone Name	AAEC-19
Purity	Affinity purified
UniProt	P16109
Applications	Western Blot : 1:500-1:2000
Limitations	This SELP antibody is available for research use only.



Western blot testing of HUVEC lysate with SELP antibody. Expected molecular weight: 86-140 kDa depending on glycosylation level.

### Description

The SELP gene encodes a 140 kDa protein that is stored in the alpha-granules of platelets and Weibel-Palade bodies of endothelial cells. This protein redistributes to the plasma membrane during platelet activation and degranulation and mediates the interaction of activated endothelial cells or platelets with leukocytes. The membrane protein is a calcium-dependent receptor that binds to sialylated forms of Lewis blood group carbohydrate antigens on neutrophils and monocytes. [RefSeq]

### Application Notes

Optimal dilution of the SELP antibody should be determined by the researcher.

## **Immunogen**

A synthetic peptide specific to human CD62P / SELP was used as the immunogen for the SELP antibody.

## **Storage**

Store the SELP antibody at -20oC.