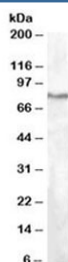


SEL1L Antibody (R36134)

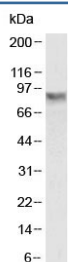
Catalog No.	Formulation	Size
R36134-100UG	0.5 mg/ml in 1X TBS, pH7.3, with 0.5% BSA (US sourced) and 0.02% sodium azide	100 ug

[Bulk quote request](#)

Availability	1-3 business days
Species Reactivity	Human
Format	Antigen affinity purified
Host	Goat
Clonality	Polyclonal (goat origin)
Isotype	Goat Ig
Purity	Antigen affinity
Gene ID	6400
Applications	Western Blot : 1-3ug/ml ELISA (peptide) LOD : 1:4000
Limitations	This SEL1L antibody is available for research use only.



Western blot testing of HepG2 lysate with SEL1L antibody at 1ug/ml. Predicted molecular weight: ~89 kDa.



Western blot testing of HepG2 lysate with SEL1L antibody at 0.3ug/ml. Predicted molecular weight: ~89 kDa.

Description

Additional name(s) for this target protein: Sel-1 suppressor of lin-12-like

Application Notes

Optimal dilution of the SEL1L antibody should be determined by the researcher.

Immunogen

Amino acids TAYNSYKGDYD were used as the immunogen for this SEL1L antibody.

Storage

Aliquot and store the SEL1L antibody at -20°C.