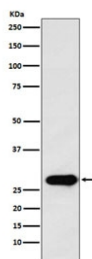


## Securin Antibody [clone ADFH-16] (RQ4823)

Catalog No.	Formulation	Size
RQ4823	Antibody in PBS with 0.02% sodium azide, 50% glycerol and 0.4-0.5mg/ml BSA	100 ul

[Bulk quote request](#)

Availability	1-2 weeks
Species Reactivity	Human
Format	Purified
Clonality	Rabbit Monoclonal
Isotype	Rabbit IgG
Clone Name	ADFH-16
Purity	Affinity purified
UniProt	O95997
Applications	Western Blot : 1:1000-1:5000
Limitations	This Securin antibody is available for research use only.



Western blot testing with Securin antibody. Predicted molecular weight ~22 kDa, can be observed at 25-30 kDa.

### Description

Securin is a regulatory protein which plays a central role in chromosome stability, in the p53/TP53 pathway, and DNA repair. [UniProt]

### Application Notes

Optimal dilution of the Securin antibody should be determined by the researcher.

### Immunogen

A synthetic peptide specific to human Securin / PTTG1 was used as the immunogen for the Securin antibody.

## **Storage**

Store the Securin antibody at -20oC.