

Secretory Component Antibody / ECM1 [clone SC05] (V2104)

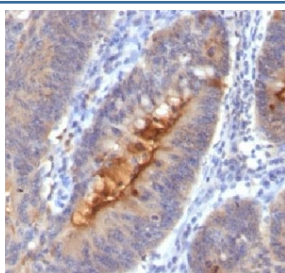
Catalog No.	Formulation	Size
V2104-100UG	0.2 mg/ml in 1X PBS with 0.1 mg/ml BSA (US sourced) and 0.05% sodium azide	100 ug
V2104-20UG	0.2 mg/ml in 1X PBS with 0.1 mg/ml BSA (US sourced) and 0.05% sodium azide	20 ug
V2104SAF-100UG	1 mg/ml in 1X PBS; BSA free, sodium azide free	100 ug
V2104IHC-7ML	Prediluted in 1X PBS with 0.1 mg/ml BSA (US sourced) and 0.05% sodium azide; *For IHC use only*	7 ml



Citations (1)

[Bulk quote request](#)

Species Reactivity	Human, Rat
Format	Purified
Clonality	Monoclonal (mouse origin)
Isotype	Mouse IgG1, kappa
Clone Name	SC05
Purity	Protein G affinity chromatography
Buffer	1X PBS, pH 7.4
UniProt	Q16610
Localization	Cell surface and cytoplasmic
Applications	Flow Cytometry : 0.5-1ug/10 ⁶ cells Immunofluorescence : 1-2ug/ml Immunohistochemistry (FFPE) : 0.5-1ug/ml for 30 min at RT
Limitations	This Secretory Component antibody is available for research use only.



IHC testing of human colon carcinoma and Secretory Component antibody (SC05).

Description

This antibody reacts with a reduction-resistant epitope present in both free and SIgA bound Secretory component. It does not react with the cell lines lacking this protein. The antibody is useful for studying the distribution and level of both free and bound secretory component. Secretory component is differentially expressed in epithelium, and the antibody is a popular marker for identifying subpopulations of epithelial cells and epithelial differentiation. The Secretory component antibody is a useful research tool for studying mucosal immunity, inflammation, remodeling, differentiation and tumorigenesis, all processes associated with differential secretory component expression.

Application Notes

The concentration stated for each application is a general starting point. Variations in protocols, secondaries and substrates may require the antibody to be titrated up or down for optimal performance.

1. Staining of formalin-fixed tissues requires boiling tissue sections in 10mM Citrate Buffer, pH 6.0, for 10-20 min followed by cooling at RT for 20 minutes.
2. The prediluted format is supplied in a dropper bottle and is optimized for use in IHC. After epitope retrieval step (if required), drip mAb solution onto the tissue section and incubate at RT for 30 min.

Immunogen

Secretory component protein isolated from human colostrum was used as the immunogen.

Storage

Store the Secretory Component antibody at 2-8oC (with azide) or aliquot and store at -20oC or colder (without azide).

Alternate Names

ECM1, Extracellular Matrix Protein 1, URBWD, Secretory component antibody

References (1)