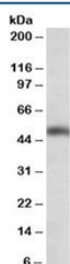


## SEC61 Antibody (R34412)

Catalog No.	Formulation	Size
R34412-100UG	0.5 mg/ml in 1X TBS, pH7.3, with 0.5% BSA (US sourced) and 0.02% sodium azide	100 ug

[Bulk quote request](#)

Availability	1-3 business days
Species Reactivity	Human
Predicted Reactivity	Cow, Dog, Pig
Format	Antigen affinity purified
Clonality	Polyclonal (goat origin)
Isotype	Goat Ig
Purity	Antigen affinity
Gene ID	29927
Applications	Western Blot : 0.3-1ug/ml ELISA (peptide) LOD : 1:16000
Limitations	This SEC61 antibody is available for research use only.



Western blot testing of human cerebellum lysate with SEC61 antibody at 0.3ug/ml.  
Predicted molecular weight: ~52kDa.

## Description

Additional name(s) for this target protein: SEC61 alpha subunit isoform 1; SEC61A1

## Application Notes

Optimal dilution of the SEC61 antibody should be determined by the researcher.

## Immunogen

Amino acids KEQSEVGSMGALLF were used as the immunogen for this SEC61 antibody.

## **Storage**

Aliquot and store the SEC61 antibody at -20oC.