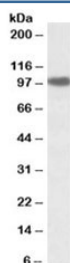


## SEC23A Antibody (R33152)

Catalog No.	Formulation	Size
R33152-100UG	0.5 mg/ml in 1X TBS, pH7.3, with 0.5% BSA (US sourced) and 0.02% sodium azide	100 ug

[Bulk quote request](#)

Availability	1-3 business days
Species Reactivity	Human, Mouse
Predicted Reactivity	Cow, Dog, Horse, Rat
Format	Antigen affinity purified
Host	Goat
Clonality	Polyclonal (goat origin)
Isotype	Goat Ig
Purity	Antigen affinity
Gene ID	10484
Applications	Western Blot : 1-3ug/ml ELISA (peptide) LOD : 1:32000
Limitations	This SEC23A antibody is available for research use only.



Western blot testing of NIH3T3 lysate with SEC23A antibody at 2ug/ml. Predicted molecular weight: ~86kDa, observed here at ~100kDa.

### Description

Additional name(s) for this target protein: SEC23-related protein A

### Application Notes

Optimal dilution of the SEC23A antibody should be determined by the researcher.

## Immunogen

Amino acids ANRAATTGHVID were used as the immunogen for this SEC23A antibody.

## Storage

Aliquot and store the SEC23A antibody at -20oC.