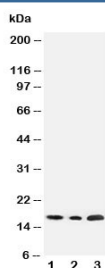


SDHC Antibody (R30937)

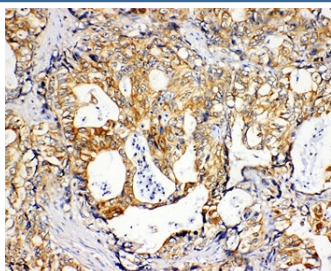
Catalog No.	Formulation	Size
R30937	0.5mg/ml if reconstituted with 0.2ml sterile DI water	100 ug

Bulk quote request

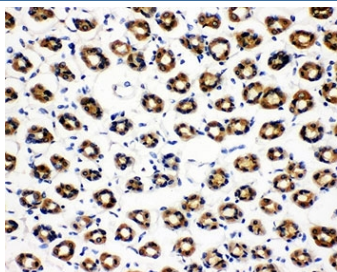
Availability	1-3 business days
Species Reactivity	Human, Mouse, Rat
Format	Antigen affinity purified
Clonality	Polyclonal (rabbit origin)
Isotype	Rabbit IgG
Purity	Antigen affinity
Buffer	Lyophilized from 1X PBS with 2.5% BSA and 0.025% sodium azide/thimerosal
UniProt	Q99643
Applications	Western Blot : 0.5-1ug/ml IHC (FFPE) : 0.5-1ug/ml
Limitations	This SDHC antibody is available for research use only.



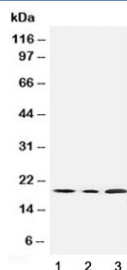
Western blot testing of SDHC antibody and Lane 1: rat liver; 2: HeLa; 3: Jurkat cell lysate



IHC-P: SDHC antibody testing of human gastric cancer tissue



IHC-P: SDHC antibody testing of rat gastric tissue



Western blot testing of SDHC antibody and Lane 1: rat liver; 2: mouse liver; 3: human HeLa cell lysate

Description

The Succinate dehydrogenase complex, subunit C (SDHC), also called SDH3, gene contains 6 exons. Oostveen et al.(1995) found that in fact it was protein from the bovine SDHC/SDH3 gene (encoding 1 of the 2 integral membrane proteins) that complemented the hamster mutation. The authors localized the human SDH3 gene to the short arm of chromosome one, within 1 to 2 Mb from the centromere. Additionally, the authors stated that Southern analyses of human genomic DNA suggested that there are multiple SDH3 genes or pseudogenes. Elbehti-Green et al.(1998) confirmed the assignment of the SDHC gene to 1q21 by FISH. Baysal et al.(2004) described a family with PGL3 in which an 8,372-bp deletion in the SDHC gene was transmitted both maternally and paternally, without evidence of genomic imprinting.

Application Notes

The stated application concentrations are suggested starting amounts. Titration of the SDHC antibody may be required due to differences in protocols and secondary/substrate sensitivity.

Immunogen

An amino acid sequence from the N-terminus of human Succinate dehydrogenase complex subunit C (KEEMERFWNKNIGSNR) was used as the immunogen for this SDHC antibody.

Storage

After reconstitution, the SDHC antibody can be stored for up to one month at 4°C. For long-term, aliquot and store at -20°C. Avoid repeated freezing and thawing.