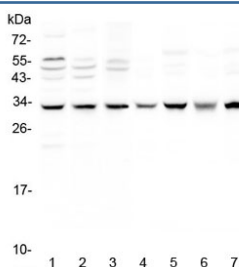


SDHB Antibody (RQ4182)

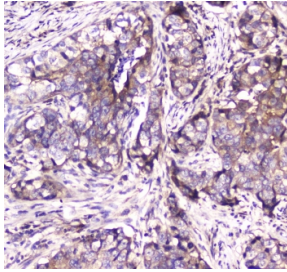
Catalog No.	Formulation	Size
RQ4182	0.5mg/ml if reconstituted with 0.2ml sterile DI water	100 ug

[Bulk quote request](#)

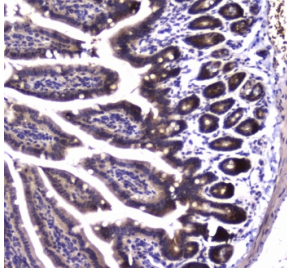
Availability	1-3 business days
Species Reactivity	Human, Mouse, Rat
Format	Antigen affinity purified
Host	Rabbit
Clonality	Polyclonal (rabbit origin)
Isotype	Rabbit IgG
Purity	Antigen affinity purified
Buffer	Lyophilized from 1X PBS with 2% Trehalose and 0.025% sodium azide
UniProt	P21912
Localization	Cytoplasmic (mitochondrial)
Applications	Western Blot : 0.5-1ug/ml IHC (FFPE) : 1-2ug/ml Immunofluorescence/Immunocytochemistry : 2-4ug/ml Direct ELISA : 0.1-0.5ug/ml
Limitations	This SDHB antibody is available for research use only.



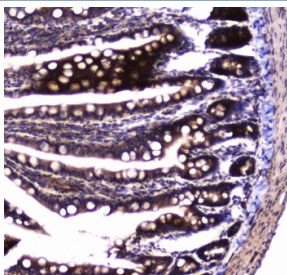
Western blot testing of 1) human MCF7, 2) A549, 3) SGC-7901, 4) rat brain, 5) rat heart, 6) mouse brain and 7) mouse heart lysate with SDHB antibody at 0.5ug/ml. Predicted molecular weight ~32 kDa.



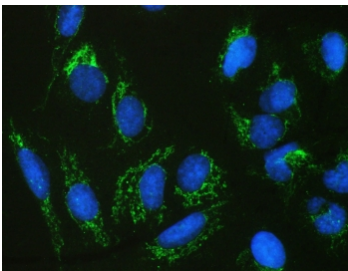
IHC testing of FFPE human breast cancer tissue with SDHB antibody at 1ug/ml. Required HIER: steam section in pH6 citrate buffer for 20 min and allow to cool prior to staining.



IHC testing of FFPE mouse small intestine tissue with SDHB antibody at 1ug/ml. Required HIER: steam section in pH6 citrate buffer for 20 min and allow to cool prior to staining.



IHC testing of FFPE rat small intestine tissue with SDHB antibody at 1ug/ml. Required HIER: steam section in pH6 citrate buffer for 20 min and allow to cool prior to staining.



IF/ICC staining of FFPE human U-2 OS cells with SDHB antibody (green) at 2ug/ml and DAPI nuclear stain (blue). HIER: steam section in pH6 citrate buffer for 20 min.

Description

SDHB (Succinate Dehydrogenase Complex, Subunit B, iron sulfur protein), also known as iron-sulfur subunit of complex II (I_p) or SDH2, HOMOLOG OF, is a protein that in humans is encoded by the SDHB gene. SDHB is one of four protein subunits forming succinate dehydrogenase, the other three being SDHA, SDHC and SDHD. The SDHB subunit is connected to the SDHA subunit on the hydrophilic, catalytic end of the SDH complex. The SDHB gene is mapped on 1p36.13. It is stated that the nuclear-encoded Krebs cycle enzymes fumarate hydratase and succinate dehydrogenases like SDHB act as tumor suppressors, and germline mutations in these genes predispose individuals to leiomyomas and renal cancer and to paragangliomas, respectively. In affected members of families with paragangliomas-4, mutations were identified in the SDHB gene.

Application Notes

Optimal dilution of the SDHB antibody should be determined by the researcher.

Immunogen

A recombinant human protein corresponding to amino acids A29-V280 was used as the immunogen for the SDHB antibody.

Storage

After reconstitution, the SDHB antibody can be stored for up to one month at 4°C. For long-term, aliquot and store at -20°C. Avoid repeated freezing and thawing.