

SDHB Antibody (R33193)

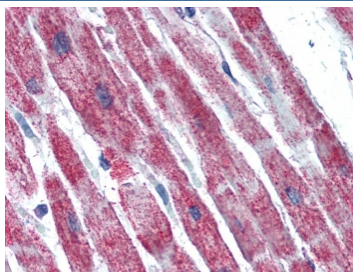
Catalog No.	Formulation	Size
R33193-100UG	0.5 mg/ml in 1X TBS, pH7.3, with 0.5% BSA (US sourced) and 0.02% sodium azide	100 ug

[Bulk quote request](#)

Availability	1-3 business days
Species Reactivity	Human
Format	Antigen affinity purified
Host	Goat
Clonality	Polyclonal (goat origin)
Isotype	Goat Ig
Purity	Antigen affinity
Gene ID	6390
Localization	Cytoplasmic
Applications	Western Blot : 0.03-0.1ug/ml IHC (FFPE) : 5ug/ml ELISA (peptide) LOD : 1:8000
Limitations	This SDHB antibody is available for research use only.



Western blot testing of human liver lysate with SDHB antibody at 0.03ug/ml.
Predicted/observed molecular weight ~32/28 kDa.



IHC testing of FFPE human heart tissue with SDHB antibody at 5ug/ml. Required HIER: steamed antigen retrieval with pH6 citrate buffer; AP-staining.

Description

Additional name(s) for this target protein: Succinate dehydrogenase complex, subunit B

Application Notes

Optimal dilution of the SDHB antibody should be determined by the researcher.

Immunogen

Amino acids ATYKEKKASV were used as the immunogen for this SDHB antibody.

Storage

Aliquot and store the SDHB antibody at -20oC.