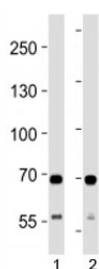


## SDHA Antibody (F52276)

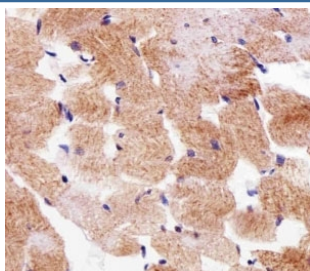
Catalog No.	Formulation	Size
F52276-0.4ML	In 1X PBS, pH 7.4, with 0.09% sodium azide	0.4 ml
F52276-0.08ML	In 1X PBS, pH 7.4, with 0.09% sodium azide	0.08 ml

[Bulk quote request](#)

<b>Availability</b>	1-3 business days
<b>Species Reactivity</b>	Human
<b>Predicted Reactivity</b>	Rat, Xenopus
<b>Format</b>	Antigen affinity purified
<b>Clonality</b>	Polyclonal (rabbit origin)
<b>Isotype</b>	Rabbit Ig
<b>Purity</b>	Antigen affinity
<b>UniProt</b>	P31040
<b>Applications</b>	IHC (Paraffin) : 1:25 Western Blot : 1:1000
<b>Limitations</b>	This SDHA antibody is available for research use only.



SDHA antibody western blot analysis in 1) human HeLa and 2) mouse C2C12 lysate. Predicted molecular weight ~72 kDa.



IHC analysis of FFPE human skeletal muscle section using SDHA antibody; Ab was diluted at 1:25.

## Description

Flavoprotein (FP) subunit of succinate dehydrogenase (SDH) that is involved in complex II of the mitochondrial electron transport chain and is responsible for transferring electrons from succinate to ubiquinone (coenzyme Q). Can act as a tumor suppressor.

## Application Notes

Titration of the SDHA antibody may be required due to differences in protocols and secondary/substrate sensitivity.

## Immunogen

A portion of amino acids 577-605 from the human protein was used as the immunogen for this SDHA antibody.

## Storage

Aliquot the SDHA antibody and store frozen at -20oC or colder. Avoid repeated freeze-thaw cycles.