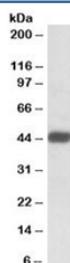


SDF4 Antibody (R34049)

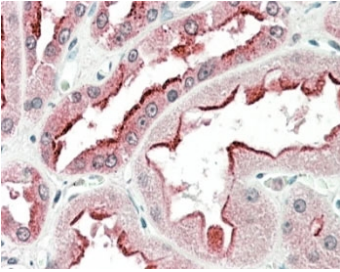
Catalog No.	Formulation	Size
R34049-100UG	0.5 mg/ml in 1X TBS, pH7.3, with 0.5% BSA (US sourced) and 0.02% sodium azide	100 ug

[Bulk quote request](#)

Availability	1-3 business days
Species Reactivity	Human
Predicted Reactivity	Cow, Dog, Mouse, Rat
Format	Antigen affinity purified
Host	Goat
Clonality	Polyclonal (goat origin)
Isotype	Goat Ig
Purity	Antigen affinity
Gene ID	51150
Applications	Western Blot : 0.1-0.3ug/ml Immunohistochemistry (FFPE) : 5-10ug/ml ELISA (peptide) LOD : 1:64000
Limitations	This SDF4 antibody is available for research use only.



Western blot testing of Jurkat lysate with SDF4 antibody at 0.1ug/ml. Predicted molecular weight: ~42kDa.



IHC staining of FFPE human kidney with SDF4 antibody at 5ug/ml. HIER: steamed with pH6 citrate buffer, AP-staining.

Description

Additional name(s) for this target protein: Stromal cell derived factor 4

Application Notes

Optimal dilution of the SDF4 antibody should be determined by the researcher.

Immunogen

Amino acids EYKVKFLASKGHSEK were used as the immunogen for this SDF4 antibody.

Storage

Aliquot and store the SDF4 antibody at -20oC.