

SDF2-like protein 1 Antibody / SDF2L1 (F54671)

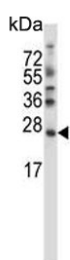
Catalog No.	Formulation	Size
F54671-0.4ML	In 1X PBS, pH 7.4, with 0.09% sodium azide	0.4 ml
F54671-0.08ML	In 1X PBS, pH 7.4, with 0.09% sodium azide	0.08 ml

[Bulk quote request](#)

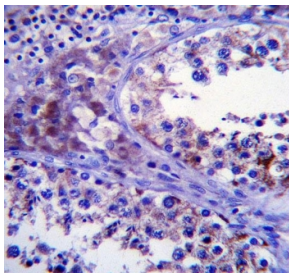
Availability	1-3 business days
Species Reactivity	Human, Mouse
Format	Purified
Host	Rabbit
Clonality	Polyclonal (rabbit origin)
Isotype	Rabbit Ig
Purity	Antigen affinity purified
UniProt	Q9HCN8
Applications	Flow Cytometry : 1:25 (1x10 ⁶ cells) Western Blot : 1:500-1:2000 Immunohistochemistry (FFPE) : 1:25
Limitations	This SDF2-like protein 1 antibody is available for research use only.



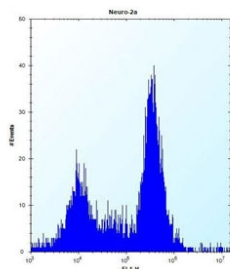
Western blot testing of mouse Neuro-2a cell lysate with SDF2-like protein 1 antibody.
Predicted molecular weight ~24 kDa.



Western blot testing of human SK-BR-3 cell lysate with SDF2-like protein 1 antibody.
Predicted molecular weight ~24 kDa.



IHC testing of FFPE human testis tissue with SDF2-like protein 1 antibody. HIER: steam section in pH6 citrate buffer for 20 min and allow to cool prior to staining.



Flow cytometry testing of mouse Neuro-2a cells with SDF2-like protein 1 antibody; Left=isotype control, Right= SDF2-like protein 1 antibody.

Application Notes

The stated application concentrations are suggested starting points. Titration of the SDF2-like protein 1 antibody may be required due to differences in protocols and secondary/substrate sensitivity.

Immunogen

A portion of amino acids 160-189 from the human protein was used as the immunogen for the SDF2-like protein 1 antibody.

Storage

Aliquot the SDF2-like protein 1 antibody and store frozen at -20oC or colder. Avoid repeated freeze-thaw cycles.