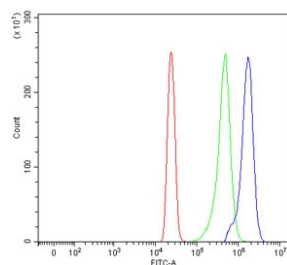


SDCCAG3 Antibody / Serologically defined colon cancer antigen 3 / ENTR1 (RQ7505)

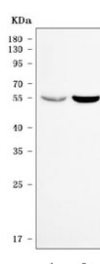
Catalog No.	Formulation	Size
RQ7505	0.5mg/ml if reconstituted with 0.2ml sterile DI water	100 ug

Bulk quote request

Availability	1-3 business days
Species Reactivity	Human
Format	Antigen affinity purified
Clonality	Polyclonal (rabbit origin)
Isotype	Rabbit IgG
Purity	Antigen affinity purified
Buffer	Lyophilized from 1X PBS with 2% Trehalose
UniProt	Q96C92
Applications	Western Blot : 0.5-1ug/ml Flow Cytometry : 1-3ug/million cells Direct ELISA : 0.1-0.5ug/ml
Limitations	This SDCCAG3 antibody is available for research use only.



Flow cytometry testing of human HL60 cells with SDCCAG3 antibody at 1ug/million cells (blocked with goat sera); Red=cells alone, Green=isotype control, Blue= SDCCAG3 antibody.



Western blot testing of human 1) HeLa and 2) A549 cell lysate with SDCCAG3 antibody. Predicted molecular weight: 40-48 kDa (multiple isoforms), but may be observed at higher molecular weights due to phosphorylation.

Description

Serologically defined colon cancer antigen 3 (SDCCAG3), also called Endosome-associated-trafficking regulator 1 (ENTR1) is involved in several processes, including endocytic recycling; positive regulation of cilium assembly; and positive regulation of protein localization to cilium. Located in endosome; microtubule organizing center; and midbody. Colocalizes with retromer complex.

Application Notes

Optimal dilution of the SDCCAG3 antibody should be determined by the researcher.

Immunogen

E. coli-derived recombinant human protein (amino acids M1-R424) was used as the immunogen for the SDCCAG3 antibody.

Storage

After reconstitution, the SDCCAG3 antibody can be stored for up to one month at 4°C. For long-term, aliquot and store at -20°C. Avoid repeated freezing and thawing.