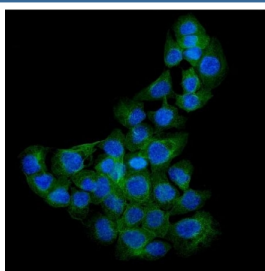


SDC1 Antibody / Syndecan-1 / CD138 (R31994)

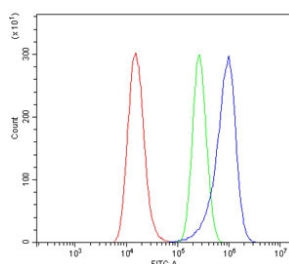
Catalog No.	Formulation	Size
R31994	0.5mg/ml if reconstituted with 0.2ml sterile DI water	100 ug

Bulk quote request

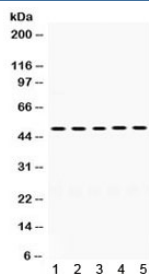
Availability	1-3 business days
Species Reactivity	Human
Format	Antigen affinity purified
Clonality	Polyclonal (rabbit origin)
Isotype	Rabbit IgG
Purity	Antigen affinity
Buffer	Lyophilized from 1X PBS with 2.5% BSA and 0.025% sodium azide
UniProt	P18827
Applications	Western Blot : 0.1-0.5ug/ml Immunofluorescence (FFPE) : 2-4ug/ml Flow Cytometry : 1-3ug/million cells
Limitations	This SDC1 antibody is available for research use only.



Immunofluorescent staining of FFPE human A431 cells with SDC1 antibody (green) and DAPI nuclear stain (blue). HIER: steam section in pH6 citrate buffer for 20 min.



Flow cytometry testing of human A549 cells with SDC1 antibody at 1ug/million cells (blocked with goat sera); Red=cells alone, Green=isotype control, Blue= SDC1 antibody.



Western blot testing of human 1) HT1080, 2) MCF7, 3) 293, 4) HepG2 and 5) HeLa cell lysate with SDC1 antibody. Expected molecular weight: 32-95 kDa depending on glycosylation level.

Description

Syndecan 1 is a protein which in humans is encoded by the SDC1 gene. The protein encoded by this gene is a transmembrane (type I) heparan sulfate proteoglycan and is a member of the syndecan proteoglycan family. The syndecans mediate cell binding, cell signaling, and cytoskeletal organization and syndecan receptors are required for internalization of the HIV-1 tat protein. The syndecan-1 protein functions as an integral membrane protein and participates in cell proliferation, cell migration and cell-matrix interactions via its receptor for extracellular matrix proteins. Altered syndecan-1 expression has been detected in several different tumor types. While several transcript variants may exist for this gene, the full-length nature of only two have been described to date. These two represent the major variants of this gene and encode the same protein.

Application Notes

Optimal dilution of the SDC1 antibody should be determined by the researcher.

Immunogen

Amino acids ENTAVVAVEPDRRNQSPVDQGATGASQGLLDLDRKE of human Syndecan-1 were used as the immunogen for the SDC1 antibody.

Storage

After reconstitution, the SDC1 antibody can be stored for up to one month at 4°C. For long-term, aliquot and store at -20°C. Avoid repeated freezing and thawing.