

Scurfin Antibody / Foxp3 (R34634)

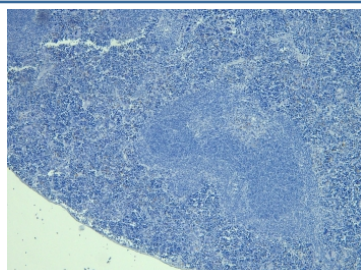
| Catalog No. | Formulation | Size |
|--------------|---|--------|
| R34634-100UG | 0.5 mg/ml in 1X TBS, pH7.3, with 0.5% BSA (US sourced) and 0.02% sodium azide | 100 ug |

[Bulk quote request](#)

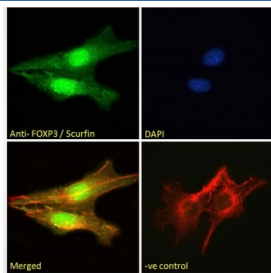
| | |
|-----------------------------|---|
| Availability | 1-3 business days |
| Species Reactivity | Mouse |
| Predicted Reactivity | Rat |
| Format | Antigen affinity purified |
| Clonality | Polyclonal (goat origin) |
| Isotype | Goat Ig |
| Purity | Antigen affinity |
| Gene ID | 20371 |
| Applications | Immunohistochemistry (FFPE) : 6-8ug/ml Immunofluorescence : 10ug/ml Flow Cytometry : 10ug/ml ELISA (peptide) LOD : 1:32000 |
| Limitations | This Scurfin antibody is available for research use only. |



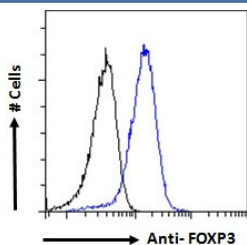
IHC staining of FFPE mouse spleen tissue with Scurfin antibody at 10ug/ml. Required HIER: steamed antigen retrieval with pH6 citrate buffer.



Negative control: IHC staining of FFPE mouse spleen tissue without Scurfin antibody. Required HIER: steamed antigen retrieval with pH6 citrate buffer.



Immunofluorescent staining of fixed and permeabilized mouse NIH 3T3 cells with Scurfin antibody (green) at 10ug/ml, phalloidin (red) and DAPI nuclear stain (blue).



FACS testing of fixed and permeabilized mouse NIH 3T3 cells with Scurfin antibody (blue) at 10ug/million cells in 0.2ml and naive goat Ig (black).

Description

Additional name(s) for this target protein: Forkhead box P3; Foxp3

Application Notes

Optimal dilution of the Scurfin antibody should be determined by the researcher.

Immunogen

Amino acids KRSQRPNKCSNP were used as the immunogen for this Scurfin antibody.

Storage

Aliquot and store the Scurfin antibody at -20oC.