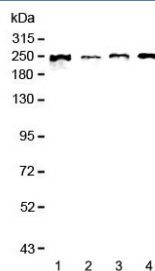


SCRIB Antibody / SCRIBBLE (RQ4322)

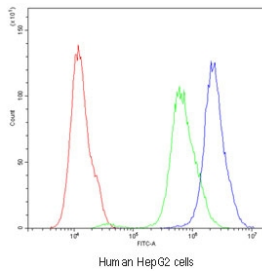
Catalog No.	Formulation	Size
RQ4322	0.5mg/ml if reconstituted with 0.2ml sterile DI water	100 ug

[Bulk quote request](#)

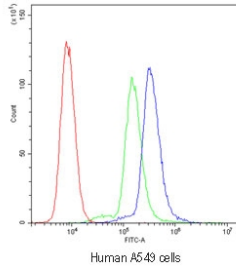
Availability	1-3 business days
Species Reactivity	Human
Format	Antigen affinity purified
Host	Rabbit
Clonality	Polyclonal (rabbit origin)
Isotype	Rabbit IgG
Purity	Antigen affinity purified
Buffer	Lyophilized from 1X PBS with 2% Trehalose and 0.025% sodium azide
UniProt	Q14160
Localization	Cell membrane
Applications	Western Blot : 0.5-1ug/ml Flow Cytometry : 1-3ug/million cells Direct ELISA : 0.1-0.5ug/ml Immunofluorescence : 2-4ug/ml
Limitations	This SCRIB antibody is available for research use only.



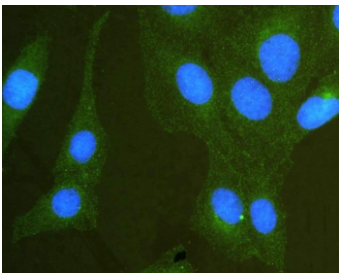
Western blot testing of human 1) MCF7, 2) COLO-320, 3) 22RV1 and 4) SGC-7901 lysate with SCRIB antibody at 0.5ug/ml. Predicted molecular weight ~175 kDa, routinely observed at 200-240 kDa.



Flow cytometry testing of human HepG2 cells with SCRIB antibody at 1ug/10⁶ cells (blocked with goat sera); Red=cells alone, Green=isotype control, Blue=SCRIB antibody.



Flow cytometry testing of human A549 cells with SCRIB antibody at 1ug/10⁶ cells (blocked with goat sera); Red=cells alone, Green=isotype control, Blue=SCRIB antibody.



IF/ICC staining of FFPE human U-2 OS cells with SCRIB antibody (green) at 2ug/ml and DAPI nuclear stain (blue). HIER: steam section in pH6 citrate buffer for 20 min.

Description

SCRIB, also known as Scribble, SCRIBL, or Scribbled homolog (Drosophila), is a scaffold protein which in humans is encoded by the SCRIB gene. In *Drosophila melanogaster*, SCRIB is involved in synaptic function, neuroblast differentiation, and epithelial polarization. Mechanistically, the human homolog is a scaffold protein linked to cellular differentiation centered on the regulation of epithelial as well as neuronal morphogenesis. Deficiency in SCRIB impairs many aspects of cell polarity and cell movement. SCRIB is also likely involved in establishing apical-basal polarity as well as progression from the G1 phase to S phase in the cell cycle as a result of its relationship with cell proliferation and exocytosis.

Application Notes

Optimal dilution of the SCRIB antibody should be determined by the researcher.

Immunogen

A recombinant human protein corresponding to amino acids F172-K409 was used as the immunogen for the SCRIB antibody.

Storage

After reconstitution, the SCRIB antibody can be stored for up to one month at 4oC. For long-term, aliquot and store at -20oC. Avoid repeated freezing and thawing.

