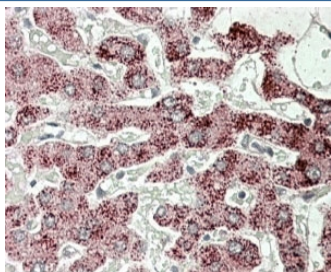


## SCP2 Antibody (R34543)

Catalog No.	Formulation	Size
R34543-100UG	0.5 mg/ml in 1X TBS, pH7.3, with 0.5% BSA (US sourced) and 0.02% sodium azide	100 ug

[Bulk quote request](#)

<b>Availability</b>	1-3 business days
<b>Species Reactivity</b>	Human
<b>Predicted Reactivity</b>	Cow, Dog, Mouse, Pig, Rat
<b>Format</b>	Antigen affinity purified
<b>Host</b>	Goat
<b>Clonality</b>	Polyclonal (goat origin)
<b>Isotype</b>	Goat Ig
<b>Purity</b>	Antigen affinity
<b>Gene ID</b>	6342
<b>Applications</b>	Immunohistochemistry (FFPE) : 3-6ug/ml ELISA (peptide) LOD : 1:32000
<b>Limitations</b>	This SCP2 antibody is available for research use only.



IHC testing of FFPE human liver with SCP2 antibody at 4ug/ml. HIER: steamed with pH6 citrate buffer, AP-staining.

### Description

Additional name(s) for this target protein: Sterol carrier protein 2

### Application Notes

Optimal dilution of the SCP2 antibody should be determined by the researcher.

1. This SCP2 antibody will detect isoforms 1/2/6/7/8.

## **Immunogen**

Amino acids KNHKHSVNNPYSQ were used as the immunogen for this SCP2 antibody.

## **Storage**

Aliquot and store the SCP2 antibody at -20oC.