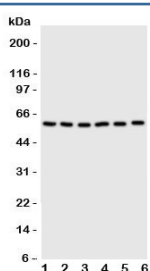


SCLY Antibody / Selenocysteine lyase (R31102)

Catalog No.	Formulation	Size
R31102	0.5mg/ml if reconstituted with 0.2ml sterile DI water	100 ug

Bulk quote request

Availability	1-3 business days
Species Reactivity	Human
Format	Antigen affinity purified
Clonality	Polyclonal (rabbit origin)
Isotype	Rabbit IgG
Purity	Antigen affinity
Buffer	Lyophilized from 1X PBS with 2.5% BSA and 0.025% sodium azide/thimerosal
UniProt	Q96I15
Applications	Western Blot : 0.5-1ug/ml
Limitations	This SCLY antibody is available for research use only.



Western blot testing of SCYL antibody on Lane 1: U87; 2: HeLa; 3: 293T; 4: MCF-7; 5: COLO320; 6: HE1080 cell lysate

Description

Selenocysteine lyase, is an enzyme that catalyzes the chemical reaction. This enzyme belongs to the family of lyases, specifically the class of carbon-sulfur lyases. The International Radiation Hybrid Mapping Consortium mapped the human SCLY gene to chromosome 2. Mihara et al.(2000) showed that mouse Scly catalyzed the conversion of L-selenocysteine to L-alanine. Scly activity required pyridoxal 5-prime phosphate, was specific to L-selenocysteine, and showed maximum reactivity at pH 9.0.

Application Notes

The stated application concentrations are suggested starting amounts. Titration of the SCLY antibody may be required

due to differences in protocols and secondary/substrate sensitivity.

Immunogen

An amino acid sequence from the C-terminus of human Selenocysteine lyase (QDLKQAVAQLEDQA) was used as the immunogen for this SCLY antibody.

Storage

After reconstitution, the SCLY antibody can be stored for up to one month at 4°C. For long-term, aliquot and store at -20°C. Avoid repeated freezing and thawing.