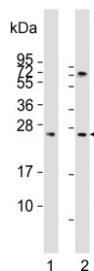


## Sclerostin Antibody / SOST (F54329)

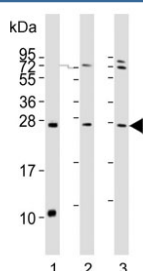
Catalog No.	Formulation	Size
F54329-0.2ML	In 1X PBS, pH 7.4, with 0.09% sodium azide	0.2 ml
F54329-0.05ML	In 1X PBS, pH 7.4, with 0.09% sodium azide	0.05 ml

[Bulk quote request](#)

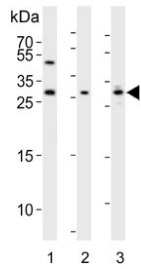
<b>Availability</b>	1-3 business days
<b>Species Reactivity</b>	Human, Mouse, Rat
<b>Format</b>	Purified
<b>Host</b>	Rabbit
<b>Clonality</b>	Polyclonal (rabbit origin)
<b>Isotype</b>	Rabbit IgG
<b>Purity</b>	Antigen affinity purified
<b>UniProt</b>	Q9BQB4
<b>Applications</b>	Immunohistochemistry (FFPE) : 1:25 Western Blot : 1:500-1:2000
<b>Limitations</b>	This Sclerostin antibody is available for research use only.



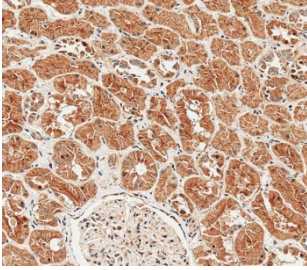
Western blot testing of human 1) kidney and 2) liver lysate with Sclerostin antibody. Predicted molecular weight ~24 kDa.



Western blot testing of 1) mouse lung, 2) human liver and 3) human HeLa lysate with Sclerostin antibody. Predicted molecular weight ~24 kDa.



Western blot testing of 1) mouse liver, 2) mouse lung and 3) rat kidney lysate with Sclerostin antibody. Predicted molecular weight ~24 kDa.



IHC testing of FFPE human kidney tissue with Sclerostin antibody. HIER: steam section in pH9 EDTA for 20 min and allow to cool prior to staining.

## Description

Sclerostin is a secreted glycoprotein with a C-terminal cysteine knot-like (CTCK) domain and sequence similarity to the DAN (differential screening-selected gene aberrative in neuroblastoma) family of bone morphogenetic protein (BMP) antagonists. Loss-of-function mutations in this gene are associated with an autosomal-recessive disorder, sclerosteosis, which causes progressive bone overgrowth. A deletion downstream of this gene, which causes reduced sclerostin expression, is associated with a milder form of the disorder called van Buchem disease.

## Application Notes

The stated application concentrations are suggested starting points. Titration of the Sclerostin antibody may be required due to differences in protocols and secondary/substrate sensitivity.

## Immunogen

A portion of amino acids 12-42 from the human protein was used as the immunogen for the Sclerostin antibody.

## Storage

Aliquot the Sclerostin antibody and store frozen at -20°C or colder. Avoid repeated freeze-thaw cycles.