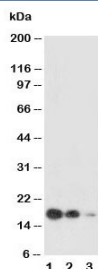


SCF Antibody / KITLG (R30642)

Catalog No.	Formulation	Size
R30642	0.5mg/ml if reconstituted with 0.2ml sterile DI water	100 ug

[Bulk quote request](#)

Availability	1-3 business days
Species Reactivity	Human
Format	Antigen affinity purified
Host	Rabbit
Clonality	Polyclonal (rabbit origin)
Isotype	Rabbit IgG
Purity	Antigen affinity
Buffer	Lyophilized from 1X PBS with 2.5% BSA, 0.025% sodium azide/thimerosal
UniProt	P21583
Localization	Cytoplasmic, nuclear
Applications	Western Blot : 0.5-1ug/ml IHC (FFPE) : 0.5-1ug/ml
Limitations	This SCF antibody is available for research use only.



Western blot testing of SCF antibody and Lane 1: recombinant human protein 10ng; 2: 5ng; 3: 2.5ng

Description

Stem Cell Factor (also called kit-ligand, KL1, and Steel factor) is a cytokine that binds to the c-Kit receptor (CD117). SCF can exist both as a transmembrane protein and a soluble protein. It is localized to the long arm of human chromosome 12, between 12q14.3 and 12qter. SCF plays a role in the regulation of HSCs in the stem cell niche in the bone marrow. It has been shown to increase the survival of HSCs in vitro and contributes to the self renewal and maintenance of HSCs in-

vivo. HSCs at all stages of development express the same levels of the receptor for SCF (c-Kit). The stromal cells that surround HSCs are a component of the stem cell niche, and they release a number of ligands, including SCF.

Application Notes

The stated application concentrations are suggested starting amounts. Titration of the SCF antibody may be required due to differences in protocols and secondary/substrate sensitivity.

Immunogen

Amino acids 26-44 (DEGICRNRVTNNVKDVTKLV-human) were used as the immunogen for this SCF antibody.

Storage

After reconstitution, the SCF antibody can be stored for up to one month at 4oC. For long-term, aliquot and store at -20oC. Avoid repeated freezing and thawing.