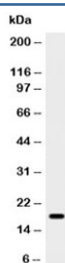


SCF Antibody / KITLG (R30112)

Catalog No.	Formulation	Size
R30112	0.5mg/ml if reconstituted with 0.2ml sterile DI water	100 ug

Bulk quote request

Availability	1-3 business days
Species Reactivity	Human
Format	Antigen affinity purified
Host	Rabbit
Clonality	Polyclonal (rabbit origin)
Isotype	Rabbit IgG
Purity	Antigen affinity
Buffer	Lyophilized from 1X PBS with 0.025% sodium azide
UniProt	P21583
Localization	Cytoplasmic, nuclear
Applications	Western Blot : 0.5-1ug/ml ELISA : 0.1-0.5ug/ml (human protein tested)
Limitations	This SCF antibody is available for research use only.



Western blot testing of human partial recombinant protein with SCF antibody at 0.5ug/ml.

Description

Stem Cell Factor (also known as SCF, kit-ligand, KL, or steel factor) is a cytokine that binds to the c-Kit receptor(CD117). The SCF gene is mapped to 12q21.32. SCF can exist both as a transmembrane protein and a soluble protein. This cytokine plays an important role in hematopoiesis(formation of blood cells), spermatogenesis, and melanogenesis. SCF may be used along with other cytokines to culture HSCs and hematopoietic progenitors. The expansion of these cells ex-

vivo(outside the body) would allow advances in bone-marrow transplantation, in which HSCs are transferred to a patient to re-establish blood formation. One of the problems of injecting SCF for therapeutic purposes is that SCF activates mast cells. The injection of SCF has been shown to cause allergic-like symptoms and the proliferation of mast cells and melanocytes.

Application Notes

The stated application concentrations are suggested starting amounts. Titration of the SCF antibody may be required due to differences in protocols and secondary/substrate sensitivity.

Immunogen

Human recombinant partial protein (AA 26-190) was used as the immunogen for this SCF antibody.

Storage

After reconstitution, the SCF antibody can be stored for up to one month at 4oC. For long-term, aliquot and store at -20oC. Avoid repeated freezing and thawing.