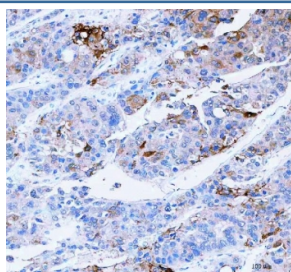


SCD1 Antibody / Stearoyl-CoA desaturase (RQ8778)

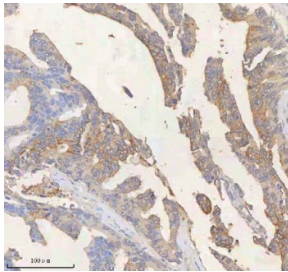
| Catalog No. | Formulation | Size |
|-------------|---|--------|
| RQ8778 | 0.5mg/ml if reconstituted with 0.2ml sterile DI water | 100 ug |

Bulk quote request

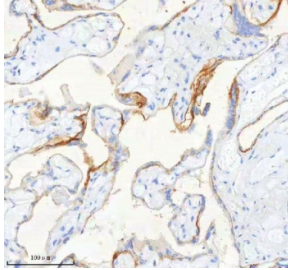
| | |
|---------------------------|---|
| Availability | 1-3 days |
| Species Reactivity | Human |
| Format | Antigen affinity purified |
| Clonality | Polyclonal (rabbit origin) |
| Isotype | Rabbit IgG |
| Purity | Antigen affinity chromatography |
| Buffer | Lyophilized from 1X PBS with 2% Trehalose |
| UniProt | O00767 |
| Localization | Cytoplasm |
| Applications | Western Blot : 1-2ug/ml Immunohistochemistry (FFPE) : 2-5ug/ml Flow Cytometry : 1-3ug/million cells ELISA : 0.1-0.5ug/ml |
| Limitations | This SCD1 antibody is available for research use only. |



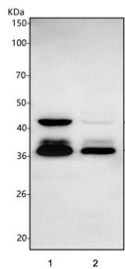
IHC staining of FFPE human liver cancer tissue with SCD1 antibody. HIER: boil tissue sections in pH8 EDTA for 20 min and allow to cool before testing.



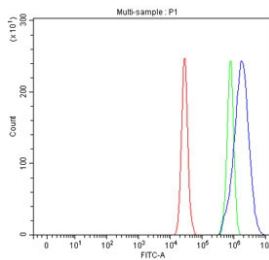
IHC staining of FFPE human rectum adenocarcinoma tissue with SCD1 antibody. HIER: boil tissue sections in pH8 EDTA for 20 min and allow to cool before testing.



IHC staining of FFPE human placental tissue with SCD1 antibody. HIER: boil tissue sections in pH8 EDTA for 20 min and allow to cool before testing.



Western blot testing of human 1) A549 and 2) HepG2 cell lysate with SCD1 antibody. Expected molecular weight: 37-42 kDa with a possible ~28 kDa degradation product.



Flow cytometry testing of fixed and permeabilized human A549 cells with SCD1 antibody at 1ug/million cells (blocked with goat sera); Red=cells alone, Green=isotype control, Blue= SCD1 antibody.

Description

This gene encodes an enzyme involved in fatty acid biosynthesis, primarily the synthesis of oleic acid. The protein belongs to the fatty acid desaturase family and is an integral membrane protein located in the endoplasmic reticulum. Transcripts of approximately 3.9 and 5.2 kb, differing only by alternative polyadenylation signals, have been detected. A gene encoding a similar enzyme is located on chromosome 4 and a pseudogene of this gene is located on chromosome 17.

Application Notes

Optimal dilution of the SCD1 antibody should be determined by the researcher.

Immunogen

An E.coli-derived human recombinant protein (amino acids W153-K357) was used as the immunogen for the SCD1 antibody.

Storage

After reconstitution, the SCD1 antibody can be stored for up to one month at 4°C. For long-term, aliquot and store at

-20oC. Avoid repeated freezing and thawing.