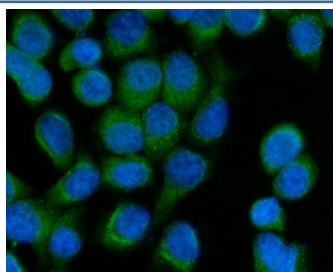


SCCPDH Antibody / Saccharopine dehydrogenase-like oxidoreductase (RQ7876)

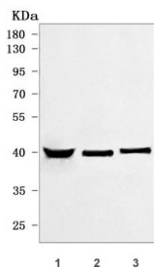
Catalog No.	Formulation	Size
RQ7876	0.5mg/ml if reconstituted with 0.2ml sterile DI water	100 ug

[Bulk quote request](#)

Availability	1-3 business days
Species Reactivity	Human
Format	Antigen affinity purified
Clonality	Polyclonal (rabbit origin)
Isotype	Rabbit IgG
Purity	Antigen affinity purified
Buffer	Lyophilized from 1X PBS with 2% Trehalose
UniProt	Q8NBX0
Localization	Nuclear, cytoplasmic
Applications	Western Blot : 0.5-1ug/ml Immunofluorescence (FFPE) : 5ug/ml Direct ELISA : 0.1-0.5ug/ml
Limitations	This SCCPDH antibody is available for research use only.



Immunofluorescent staining of FFPE human SiHa cells with SCCPDH antibody (green) and DAPI nuclear stain (blue). HIER: steam section in pH6 citrate buffer for 20 min.



Western blot testing of human 1) PC-3, 2) U-87 MG and 3) HepG2 cell lysate with SCCPDH antibody. Predicted molecular weight ~40 kDa.

Description

Predicted to enable oxidoreductase activity. Predicted to be involved in glycolipid biosynthetic process. Located in lipid droplet and midbody.

Application Notes

Optimal dilution of the SCCPDH antibody should be determined by the researcher.

Immunogen

E. coli-derived recombinant human protein (amino acids A2-L241) was used as the immunogen for the SCCPDH antibody.

Storage

After reconstitution, the SCCPDH antibody can be stored for up to one month at 4°C. For long-term, aliquot and store at -20°C. Avoid repeated freezing and thawing.