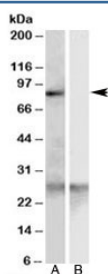


SCARF1 Antibody (R35880)

Catalog No.	Formulation	Size
R35880-100UG	0.5 mg/ml in 1X TBS, pH7.3, with 0.5% BSA (US sourced) and 0.02% sodium azide	100 ug

[Bulk quote request](#)

Availability	1-3 business days
Species Reactivity	Human
Format	Antigen affinity purified
Host	Goat
Clonality	Polyclonal (goat origin)
Isotype	Goat Ig
Purity	Antigen affinity
Gene ID	8578
Applications	Western Blot : 0.3-1.0ug/ml ICC/IF : suitable ELISA (peptide) LOD : 1:64000
Limitations	This SCARF1 antibody is available for research use only.



Western blot testing of human heart lysate with SCARF1 antibody at 0.3ug/ml with [B] and without [A] blocking/immunizing peptide. Predicted/observed molecular weight: 87kDa.

Description

Additional name(s) for this target protein: Scavenger receptor class F, member 1; scavenger receptor expressed by endothelial cells (SREC)

Application Notes

Optimal dilution of the SCARF1 antibody should be determined by the researcher.

Immunogen

Amino acids SELDPKGQHVC were used as the immunogen for this SCARF1 antibody.

Storage

Aliquot and store the SCARF1 antibody at -20oC.