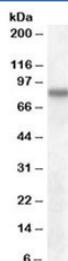


## SCARB2 Antibody (R34831)

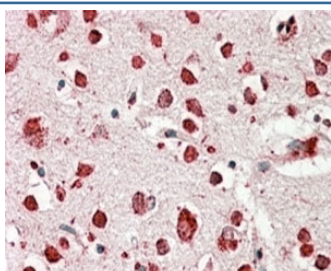
Catalog No.	Formulation	Size
R34831-100UG	0.5 mg/ml in 1X TBS, pH7.3, with 0.5% BSA (US sourced) and 0.02% sodium azide	100 ug

[Bulk quote request](#)

Availability	1-3 business days
Species Reactivity	Human
Predicted Reactivity	Mouse
Format	Antigen affinity purified
Clonality	Polyclonal (goat origin)
Isotype	Goat Ig
Purity	Antigen affinity
Gene ID	950
Applications	Western Blot : 0.1-0.3ug/ml Immunohistochemistry (FFPE) : 3-5ug/ml ELISA (peptide) LOD : 1:4000
Limitations	This SCARB2 antibody is available for research use only.



Western blot testing of human cerebral cortex lysate with SCARB2 antibody at 0.1ug/ml.  
Predicted molecular weight: ~54/85kDa (unmodified/glycosylated).



IHC staining of FFPE human cerebral cortex with SCARB2 antibody at 4ug/ml. HIER: steamed with pH6 citrate buffer, AP-staining.

## Description

Additional name(s) for this target protein: Scavenger receptor class B, member 2; SR-BII; LIMP2; LIMPII; LGP85; 85 kDa lysosomal sialoglycoprotein scavenger receptor class B, member 2

## Application Notes

Optimal dilution of the SCARB2 antibody should be determined by the researcher.

## Immunogen

Amino acids NKANIQFGDNGTTIS were used as the immunogen for this SCARB2 antibody.

## Storage

Aliquot and store the SCARB2 antibody at -20oC.

## References (1)