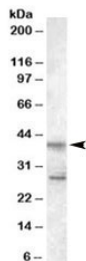


SCAP2 Antibody / SKAP2 / PRAP (R34110)

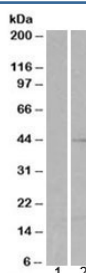
Catalog No.	Formulation	Size
R34110-100UG	0.5 mg/ml in 1X TBS, pH7.3, with 0.5% BSA (US sourced) and 0.02% sodium azide	100 ug

[Bulk quote request](#)

Availability	1-3 business days
Species Reactivity	Human
Predicted Reactivity	Cow, Dog, Mouse, Rat
Format	Antigen affinity purified
Host	Goat
Clonality	Polyclonal (goat origin)
Isotype	Goat Ig
Purity	Antigen affinity
Gene ID	8935
Applications	Western Blot : 0.5-2ug/ml ELISA (peptide) LOD : 1:32000
Limitations	This SCAP2 antibody is available for research use only.



Western blot testing of Jurkat lysate with SCAP2 antibody at 0.5ug/ml. Both the expected 40 kDa and additional 28 kDa band block with the addition of immunizing peptide.



Western blot of HEK293 lysate overexpressing SKAP2 probed with SKAP2 antibody (mock transfection in lane 1).

Description

Additional name(s) for this target protein: Src kinase-associated phosphoprotein; SKAP2; PRAP

Application Notes

Optimal dilution of the SCAP2 antibody should be determined by the researcher.

Immunogen

Amino acids GLVPKAYIMEMYDI were used as the immunogen for this SCAP2 antibody.

Storage

Aliquot and store the SCAP2 antibody at -20oC.