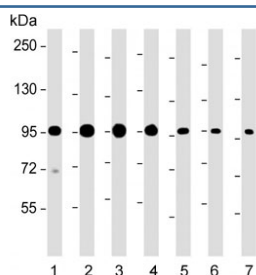


SCAP Antibody / SREBP cleavage-activating protein (F54258)

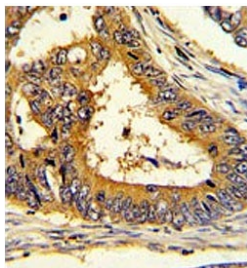
Catalog No.	Formulation	Size
F54258-0.4ML	In 1X PBS, pH 7.4, with 0.09% sodium azide	0.4 ml
F54258-0.08ML	In 1X PBS, pH 7.4, with 0.09% sodium azide	0.08 ml

[Bulk quote request](#)

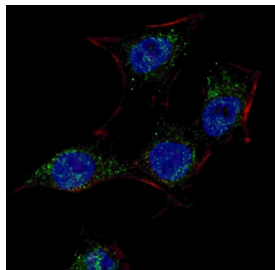
Availability	1-3 business days
Species Reactivity	Human, Mouse, Rat
Format	Purified
Host	Rabbit
Clonality	Polyclonal (rabbit origin)
Isotype	Rabbit Ig
Purity	Antigen affinity purified
UniProt	Q12770
Gene ID	22937
Localization	Cytoplasmic
Applications	Western Blot : 1:1000-1:2000 Immunohistochemistry (FFPE) : 1:50-1:100 Flow Cytometry : 1:25 (1x10 ⁶ cells) Immunofluorescence : 1:50-1:100
Limitations	This SCAP antibody is available for research use only.



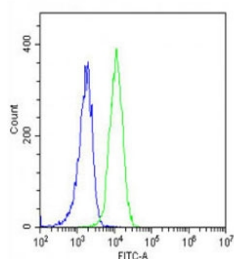
Western blot testing of human 1) HeLa, 2) HT-29, 3) K562, 4) LNCaP, 5) mouse brain, 6) mouse liver and 7) rat heart lysate with SCAP antibody. Predicted molecular weight: ~96, 98, 140 kDa (3 isoforms).



IHC testing of FFPE human colon carcinoma tissue with SCAP antibody. HIER: steam section in pH6 citrate buffer for 20 min and allow to cool prior to staining.



Immunofluorescent staining of fixed and permeabilized human HeLa cells with SCAP antibody (green), DAPI nuclear stain (blue) and anti-Actin (red).



Flow cytometry testing of fixed and permeabilized human K562 cells with SCAP antibody; Blue=isotype control, Green= SCAP antibody.

Description

SCAP is a protein with a sterol sensing domain (SSD) and seven WD domains. In the presence of cholesterol, this protein binds to sterol regulatory element binding proteins (SREBPs) and mediates their transport from the ER to the Golgi. The SREBPs are then proteolytically cleaved and regulate sterol biosynthesis.

Application Notes

The stated application concentrations are suggested starting points. Titration of the SCAP antibody may be required due to differences in protocols and secondary/substrate sensitivity.

Immunogen

A portion of amino acids 604-632 from the human protein were used as the immunogen for the SCAP antibody.

Storage

Aliquot the SCAP antibody and store frozen at -20oC or colder. Avoid repeated freeze-thaw cycles.

