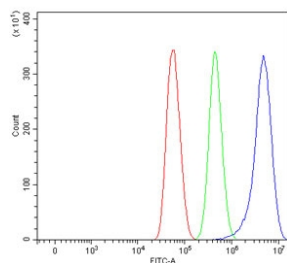


## SCAMP1 Antibody / Secretory carrier-associated membrane protein 1 (RQ7475)

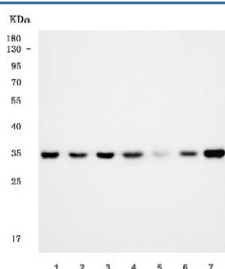
Catalog No.	Formulation	Size
RQ7475	0.5mg/ml if reconstituted with 0.2ml sterile DI water	100 ug

**Bulk quote request**

<b>Availability</b>	1-3 business days
<b>Species Reactivity</b>	Human, Mouse, Rat
<b>Format</b>	Antigen affinity purified
<b>Clonality</b>	Polyclonal (rabbit origin)
<b>Isotype</b>	Rabbit IgG
<b>Purity</b>	Antigen affinity purified
<b>Buffer</b>	Lyophilized from 1X PBS with 2% Trehalose
<b>UniProt</b>	O15126
<b>Applications</b>	Western Blot : 0.5-1ug/ml Flow Cytometry : 1-3ug/million cells Direct ELISA : 0.1-0.5ug/ml
<b>Limitations</b>	This SCAMP1 antibody is available for research use only.



Flow cytometry testing of human U-87 MG cells with SCAMP1 antibody at 1ug/million cells (blocked with goat sera); Red=cells alone, Green=isotype control, Blue= SCAMP1 antibody.



Western blot testing of 1) human SH-SY5Y, 2) human HeLa, 3) human T98G, 4) rat pancreas, 5) rat brain, 6) mouse pancreas and 7) mouse brain tissue lysate with SCAMP1 antibody. Predicted molecular weight ~35 kDa.

## Description

Secretory carrier-associated membrane protein 1 is a protein that in humans is encoded by the SCAMP1 gene. This gene product belongs to the SCAMP family of proteins, which are secretory carrier membrane proteins. They function as carriers to the cell surface in post-golgi recycling pathways. Different family members are highly related products of distinct genes, and are usually expressed together. These findings suggest that these protein family members may function at the same site during vesicular transport rather than in separate pathways. A pseudogene of this gene has been defined on chromosome 1. Alternative splicing results in multiple transcript variants.

## Application Notes

Optimal dilution of the SCAMP1 antibody should be determined by the researcher.

## Immunogen

E. coli-derived recombinant human protein (amino acids M1-N257) was used as the immunogen for the SCAMP1 antibody.

## Storage

After reconstitution, the SCAMP1 antibody can be stored for up to one month at 4°C. For long-term, aliquot and store at -20°C. Avoid repeated freezing and thawing.