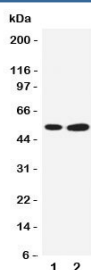


SBP Antibody / Selenium Binding Protein / SELENBP1 (R31340)

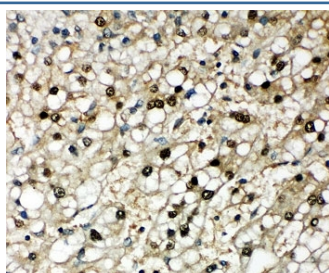
Catalog No.	Formulation	Size
R31340	0.5mg/ml if reconstituted with 0.2ml sterile DI water	100 ug

Bulk quote request

Availability	1-3 business days
Species Reactivity	Human
Format	Antigen affinity purified
Clonality	Polyclonal (rabbit origin)
Isotype	Rabbit IgG
Purity	Antigen affinity
Buffer	Lyophilized from 1X PBS with 2.5% BSA and 0.025% sodium azide/thimerosal
UniProt	Q13228
Applications	Western Blot : 0.5-1ug/ml IHC (FFPE) : 0.5-1ug/ml
Limitations	This SBP antibody is available for research use only.



Western blot testing of SBP antibody and Lane 1: COLO320; 2: PANC cell lysate



IHC-P: SBP antibody testing of human liver cancer tissue

Description

Selenium-binding protein 1, also known as SELENBP1 or SBP is a protein that in humans is encoded by the SLELNBP1 gene. This gene is mapped to 1q21.3. Selenium is an essential nutrient that exhibits potent anticarcinogenic properties, and deficiency of selenium may cause certain neurologic diseases. The effects of selenium in preventing cancer and neurologic diseases may be mediated by selenium-binding proteins, and decreased expression of this gene may be associated with several types of cancer. SBP may play a selenium-dependent role in ubiquitination/deubiquitination-mediated protein degradation.

Application Notes

The stated application concentrations are suggested starting amounts. Titration of the SBP antibody may be required due to differences in protocols and secondary/substrate sensitivity.

Immunogen

An amino acid sequence from the middle region of human Selenium Binding Protein 1 (SHLYVWDWQRHEIVQ) was used as the immunogen for this SBP antibody.

Storage

After reconstitution, the SBP antibody can be stored for up to one month at 4°C. For long-term, aliquot and store at -20°C. Avoid repeated freezing and thawing.