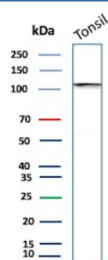


SATB2 Antibody / Special AT-rich sequence-binding protein 2 [clone SATB2/7489] (V5895)

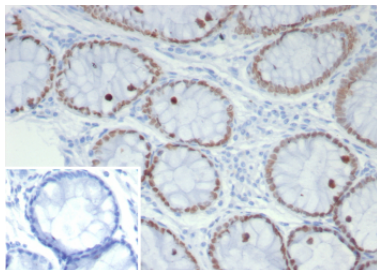
Catalog No.	Formulation	Size
V5895-100UG	0.2 mg/ml in 1X PBS with 0.05% BSA, 0.05% sodium azide	100 ug
V5895-20UG	0.2 mg/ml in 1X PBS with 0.05% BSA, 0.05% sodium azide	20 ug
V5895SAF-100UG	1 mg/ml in 1X PBS; BSA free, sodium azide free	100 ug

[Bulk quote request](#)

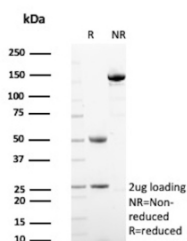
Species Reactivity	Human
Format	Purified
Host	Mouse
Clonality	Monoclonal (mouse origin)
Isotype	Mouse IgG1, kappa
Clone Name	SATB2/7489
UniProt	Q9UPW6
Localization	Nucleus
Applications	Immunohistochemistry (FFPE) : 1-2ug/ml Western Blot : 2-4ug/ml
Limitations	This SATB2/Special AT-rich sequence-binding protein 2 antibody is available for research use only.



Western blot analysis of human tonsil cell lysate using SATB2 Mouse Monoclonal Antibody (SATB2/7489).



Formalin-fixed, paraffin-embedded human colon stained with SATB2 Mouse Monoclonal Antibody (SATB2/7489). Inset: PBS instead of primary antibody; secondary only negative control.



SDS-PAGE Analysis of Purified SATB2 Mouse Monoclonal Antibody (SATB2/7489). Confirmation of Purity and Integrity of Antibody.

Application Notes

Optimal dilution of the SATB2/Special AT-rich sequence-binding protein 2 antibody should be determined by the researcher.

Immunogen

A recombinant fragment (around amino acids 150-350) of human SATB2 protein (exact sequence is proprietary) was used as the immuongen for the SATB2/Special AT-rich sequence-binding protein 2 antibody.

Storage

SATB2/Special AT-rich sequence-binding protein 2 antibody with sodium azide - store at 2 to 8oC; antibody without sodium azide - store at -20 to -80oC.