

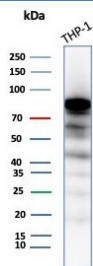
SATB2 Antibody [clone SATB2/8264R] (V4933)

Catalog No.	Formulation	Size
V4933-100UG	0.2 mg/ml in 1X PBS with 0.1 mg/ml BSA (US sourced), 0.05% sodium azide	100 ug
V4933-20UG	0.2 mg/ml in 1X PBS with 0.1 mg/ml BSA (US sourced), 0.05% sodium azide	20 ug
V4933SAF-100UG	1 mg/ml in 1X PBS; BSA free, sodium azide free	100 ug

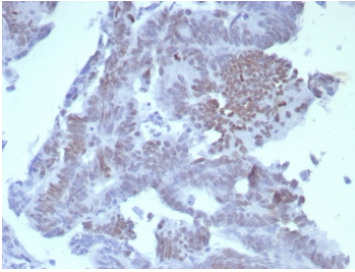
Recombinant **RABBIT MONOCLONAL**

[Bulk quote request](#)

Availability	1-3 business days
Species Reactivity	Human
Format	Purified
Host	Rabbit
Clonality	Recombinant Rabbit Monoclonal
Isotype	Rabbit IgG, kappa
Clone Name	SATB2/8264R
Purity	Protein A/G affinity
UniProt	Q9UPW6
Localization	Nucleus
Applications	Western Blot : 1-2ug/ml Immunohistochemistry (FFPE) : 1-2ug/ml for 30 min at RT
Limitations	This SATB2 antibody is available for research use only.



SATB2 Antibody ThP-1 Cell WB. Western blot testing of human THP-1 cell lysate with SATB2 antibody (clone SATB2/8264R). Predicted molecular weight ~83 kDa.



IHC staining of FFPE human colon carcinoma tissue with SATB2 antibody (clone SATB2/8264R). HIER: boil tissue sections in pH 9 10mM Tris with 1mM EDTA for 20 min and allow to cool before testing.

Description

SATB2 is a DNA binding protein that specifically binds nuclear matrix attachment regions. It is involved in transcription regulation and chromatin remodeling. SATB2 expression in colorectal carcinomas (CRC) is correlated with good prognosis and in laryngeal squamous cell carcinoma it functions as a tumor suppressor wherein loss of expression is positively correlated with high tumor grade and recurrence. Moreover, SATB2, in combination with CK20, could identify almost all CRC s. Upper gastrointestinal (GI) carcinomas and pancreatic ductal carcinomas are usually negative for SATB2, and ovarian carcinomas, lung adenocarcinomas, and adenocarcinomas from other origin are rarely positive for SATB2. Additionally, SATB2 antibody can identify neuroendocrine neoplasms of colon and rectum because SATB2 is usually negative in neuroendocrine neoplasms of the GI tract, pancreas, and lung. More recently, it has been reported that SATB2 is a sensitive marker for tumors with osteoblastic differentiation.

Researchers investigating colorectal tumor markers, epithelial lineage determination, and chromatin-associated transcriptional regulation may also be interested in our [SATB2 Antibody / Colorectal and Lineage Marker](#) page featuring validated immunohistochemistry and western blot applications for colorectal pathology research.

Application Notes

Optimal dilution of the SATB2 antibody should be determined by the researcher.

Immunogen

A recombinant partial protein sequence (within amino acids 150-350) from the human protein was used as the immunogen for the SATB2 antibody.

Storage

Aliquot the SATB2 antibody and store frozen at -20oC or colder. Avoid repeated freeze-thaw cycles.