

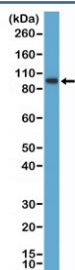
SATB2 Antibody [clone RM365] (R20384)

Catalog No.	Formulation	Size
R20384-0.1ML	Antibody in PBS with 50% glycerol, 1% BSA and 0.09% sodium azide	100 ul

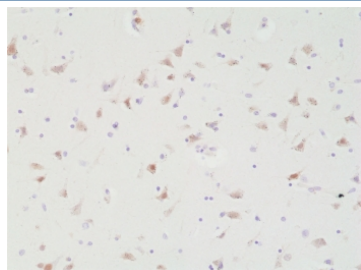
Recombinant **RABBIT MONOCLONAL**

[Bulk quote request](#)

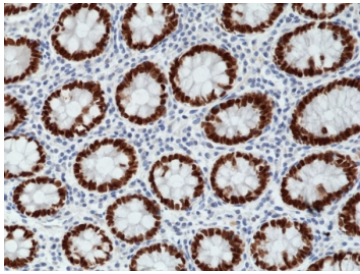
Availability	1-3 business days
Species Reactivity	Human
Format	Purified
Host	Rabbit
Clonality	Recombinant Rabbit Monoclonal
Isotype	Rabbit IgG
Clone Name	RM365
Purity	Protein A purified from animal origin-free supernatant
UniProt	Q9UPW6
Localization	Nuclear
Applications	Immunohistochemistry (FFPE) : 1:200-1:1000 Western Blot : 1:1000-1:2000
Limitations	This recombinant SATB2 antibody is available for research use only.



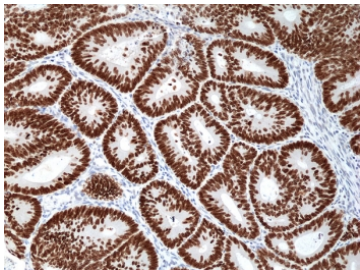
Western blot testing of human K562 cell lysate with recombinant SATB2 antibody at 1:1000 dilution. Predicted molecular weight ~83 kDa.



IHC staining of FFPE human brain tissue with recombinant SATB2 antibody at 1:200.



IHC staining of FFPE human colon tissue with recombinant SATB2 antibody at 1:1000.



IHC staining of FFPE human colon cancer tissue with recombinant SATB2 antibody at 1:1000.

Description

This antibody reacts human DNA-binding protein SATB2.

Application Notes

The stated application concentrations are suggested starting points. Titration of the recombinant SATB2 antibody may be required due to differences in protocols and secondary/substrate sensitivity.

Immunogen

A peptide corresponding to the C-terminus of human DNA-binding protein SATB2 was used as the immunogen for the recombinant SATB2 antibody.

Storage

Store the recombinant SATB2 antibody at -20°C.