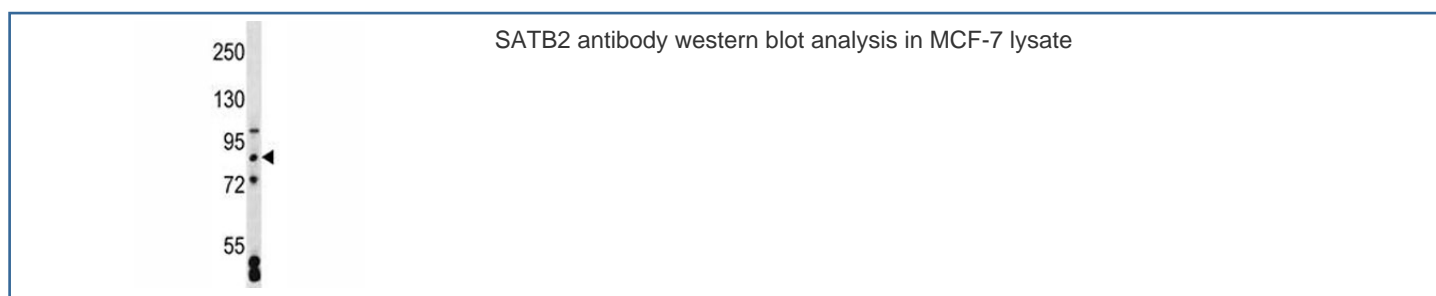


SATB2 Antibody (F44800)

Catalog No.	Formulation	Size
F44800-0.4ML	In 1X PBS, pH 7.4, with 0.09% sodium azide	0.4 ml
F44800-0.08ML	In 1X PBS, pH 7.4, with 0.09% sodium azide	0.08 ml

[Bulk quote request](#)

Availability	1-3 business days
Species Reactivity	Human
Predicted Reactivity	Mouse
Format	Antigen affinity purified
Clonality	Polyclonal (rabbit origin)
Isotype	Rabbit Ig
Purity	Antigen affinity
UniProt	Q9UPW6
Applications	Western Blot : 1:1000
Limitations	This SATB2 antibody is available for research use only.



Description

This gene encodes a DNA binding protein that specifically binds nuclear matrix attachment regions. The encoded protein is involved in transcription regulation and chromatin remodeling. Defects in this gene are associated with isolated cleft palate and mental retardation. Alternate splicing results in multiple transcript variants that encode the same protein. [provided by RefSeq].

Application Notes

Titration of the SATB2 antibody may be required due to differences in protocols and secondary/substrate sensitivity.

Immunogen

A portion of amino acids 410-439 from the human protein was used as the immunogen for this SATB2 antibody.

Storage

Aliquot the SATB2 antibody and store frozen at -20oC or colder. Avoid repeated freeze-thaw cycles.