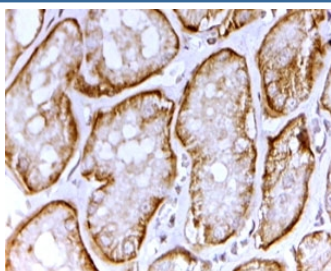


SAT1 Antibody (R35477)

Catalog No.	Formulation	Size
R35477-100UG	0.5 mg/ml in 1X TBS, pH7.3, with 0.5% BSA (US sourced) and 0.02% sodium azide	100 ug

[Bulk quote request](#)

Availability	1-3 business days
Species Reactivity	Human
Format	Antigen affinity purified
Host	Goat
Clonality	Polyclonal (goat origin)
Isotype	Goat Ig
Purity	Antigen affinity
Gene ID	10861
Applications	Immunohistochemistry (FFPE) : 2-4ug/ml ELISA (peptide) LOD : 1:4000
Limitations	This SAT1 antibody is available for research use only.



IHC testing testing of FFPE human kidney with SAT1 antibody at 2ug/ml. HIER: steamed with pH6 citrate buffer, HRP-staining.

Description

Additional name(s) for this target protein: Sulfate anion transporter 1; Solute carrier family 26 (sulfate transporter), member 1; SLC26A1

Application Notes

Optimal dilution of the SAT1 antibody should be determined by the researcher.

1. This SAT1 antibody is specific for isoform a.

Immunogen

Amino acids QTARARHRELEATD were used as the immunogen for this SAT1 antibody.

Storage

Aliquot and store the SAT1 antibody at -20oC.