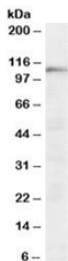


## SART1 Antibody (R34138)

Catalog No.	Formulation	Size
R34138-100UG	0.5 mg/ml in 1X TBS, pH7.3, with 0.5% BSA (US sourced) and 0.02% sodium azide	100 ug

[Bulk quote request](#)

<b>Availability</b>	1-3 business days
<b>Species Reactivity</b>	Human
<b>Predicted Reactivity</b>	Mouse, Rat, Cow
<b>Format</b>	Antigen affinity purified
<b>Host</b>	Goat
<b>Clonality</b>	Polyclonal (goat origin)
<b>Isotype</b>	Goat Ig
<b>Purity</b>	Antigen affinity
<b>Gene ID</b>	9092
<b>Applications</b>	Western Blot : 0.03-0.1ug/ml ELISA (peptide) LOD : 1:64000
<b>Limitations</b>	This SART1 antibody is available for research use only.



Western blot testing of HeLa lysate with SART1 antibody at 0.03ug/ml. Predicted molecular weight: ~90 kDa, routinely observed at 110-125 kDa.

### Description

Additional name(s) for this target protein: Squamous cell carcinoma antigen recognised by T cells

### Application Notes

Optimal dilution of the SART1 antibody should be determined by the researcher.

1. This SART1 antibody will detect both the 800 amino acid and 259 amino acid forms of the protein.

## Immunogen

Amino acids GSSKKHRGEKEAA were used as the immunogen for this SART1 antibody.

## Storage

Aliquot and store the SART1 antibody at -20oC.

## References (1)