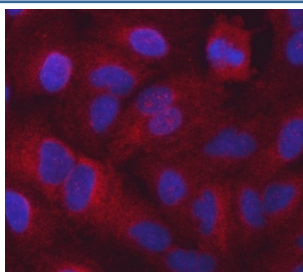


SARS1 Antibody / Seryl-tRNA synthetase / SERS (RQ7414)

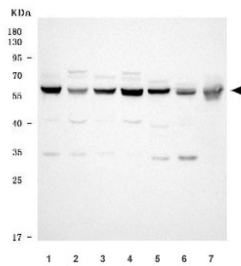
Catalog No.	Formulation	Size
RQ7414	0.5mg/ml if reconstituted with 0.2ml sterile DI water	100 ug

Bulk quote request

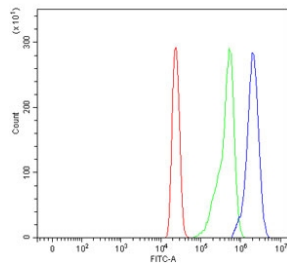
Availability	1-3 business days
Species Reactivity	Human, Mouse, Rat
Format	Antigen affinity purified
Clonality	Polyclonal (rabbit origin)
Isotype	Rabbit IgG
Purity	Antigen affinity purified
Buffer	Lyophilized from 1X PBS with 2% Trehalose
UniProt	P49591
Localization	Cytoplasmic, nuclear
Applications	Western Blot : 0.5-1ug/ml Immunofluorescence : 5ug/ml Flow Cytometry : 1-3ug/million cells Direct ELISA : 0.1-0.5ug/ml
Limitations	This SARS1 antibody is available for research use only.



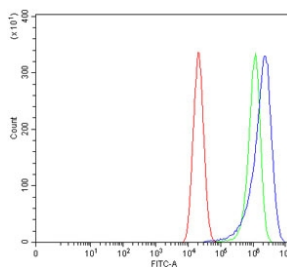
Immunofluorescent staining of FFPE human A549 cells with SARS1 antibody (red) and DAPI nuclear stain (blue). HIER: steam section in pH6 citrate buffer for 20 min.



Western blot testing of 1) human HEK293, 2) human HeLa, 3) human HepG2, 4) human K562, 5) rat C6, 6) mouse brain and 7) mouse Neuro-2a cell lysate with SARS1 antibody. Predicted molecular weight ~59 kDa.



Flow cytometry testing of human HL60 cells with SARS1 antibody at 1ug/million cells (blocked with goat sera); Red=cells alone, Green=isotype control, Blue= SARS1 antibody.



Flow cytometry testing of human Caco-2 cells with SARS1 antibody at 1ug/million cells (blocked with goat sera); Red=cells alone, Green=isotype control, Blue= SARS1 antibody.

Description

This gene belongs to the class II amino-acyl tRNA family. The encoded enzyme catalyzes the transfer of L-serine to tRNA (Ser) and is related to bacterial and yeast counterparts. Multiple alternatively spliced transcript variants have been described but the biological validity of all variants is unknown.

Application Notes

Optimal dilution of the SARS1 antibody should be determined by the researcher.

Immunogen

E. coli-derived recombinant human protein (amino acids K71-K483) was used as the immunogen for the SARS1 antibody.

Storage

After reconstitution, the SARS1 antibody can be stored for up to one month at 4oC. For long-term, aliquot and store at -20oC. Avoid repeated freezing and thawing.

