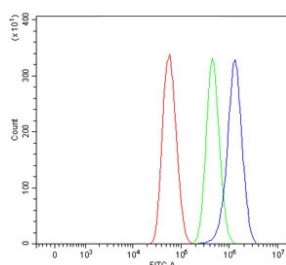


## Sarcosine dehydrogenase Antibody / SARDH (RQ7546)

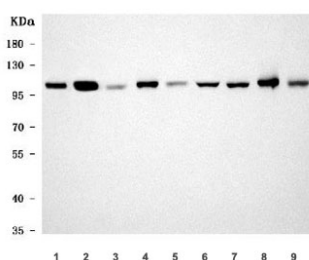
Catalog No.	Formulation	Size
RQ7546	0.5mg/ml if reconstituted with 0.2ml sterile DI water	100 ug

**Bulk quote request**

<b>Availability</b>	1-3 business days
<b>Species Reactivity</b>	Human, Mouse, Rat
<b>Format</b>	Antigen affinity purified
<b>Clonality</b>	Polyclonal (rabbit origin)
<b>Isotype</b>	Rabbit IgG
<b>Purity</b>	Antigen affinity purified
<b>Buffer</b>	Lyophilized from 1X PBS with 2% Trehalose
<b>UniProt</b>	Q9UL12
<b>Applications</b>	Western Blot : 0.5-1ug/ml Flow Cytometry : 1-3ug/million cells Direct ELISA : 0.1-0.5ug/ml
<b>Limitations</b>	This Sarcosine dehydrogenase antibody is available for research use only.



Flow cytometry testing of human U-87 MG cells with Sarcosine dehydrogenase antibody at 1ug/million cells (blocked with goat sera); Red=cells alone, Green=isotype control, Blue= Sarcosine dehydrogenase antibody.



Western blot testing of 1) human HCCT, 2) human HCCP, 3) rat pancreas, 4) rat liver, 5) rat kidney, 6) rat RH35, 7) mouse pancreas, 8) mouse liver and 9) mouse kidney tissue lysate with Sarcosine dehydrogenase antibody. Predicted molecular weight ~101 kDa.

## Description

Sarcosine dehydrogenase, mitochondrial is an enzyme that in humans is encoded by the SARDH gene. This gene encodes an enzyme localized to the mitochondrial matrix which catalyzes the oxidative demethylation of sarcosine. This enzyme is distinct from another mitochondrial matrix enzyme, dimethylglycine dehydrogenase, which catalyzes a reaction resulting in the formation of sarcosine. Mutations in this gene are associated with sarcosinemia. Alternatively spliced transcript variants have been described.

## Application Notes

Optimal dilution of the Sarcosine dehydrogenase antibody should be determined by the researcher.

## Immunogen

E. coli-derived recombinant human protein (amino acids M1-E640) was used as the immunogen for the Sarcosine dehydrogenase antibody.

## Storage

After reconstitution, the Sarcosine dehydrogenase antibody can be stored for up to one month at 4°C. For long-term, aliquot and store at -20°C. Avoid repeated freezing and thawing.