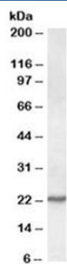


SAR1 Antibody / SAR1A (R34295)

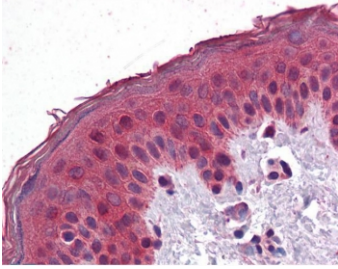
Catalog No.	Formulation	Size
R34295-100UG	0.5 mg/ml in 1X TBS, pH7.3, with 0.5% BSA (US sourced) and 0.02% sodium azide	100 ug

[Bulk quote request](#)

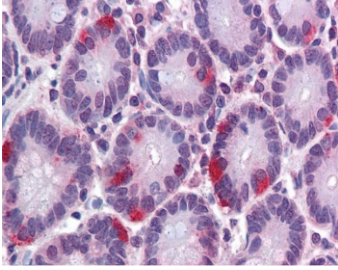
Availability	1-3 business days
Species Reactivity	Human, Mouse
Predicted Reactivity	Rat
Format	Antigen affinity purified
Host	Goat
Clonality	Polyclonal (goat origin)
Isotype	Goat Ig
Purity	Antigen affinity
Gene ID	56681
Localization	Cytoplasmic
Applications	Western Blot : 0.1-0.3ug/ml IHC (FFPE) : 3.75ug/ml ELISA (peptide) LOD : 1:32000
Limitations	This SAR1 antibody is available for research use only.



Western blot testing of NIH3T3 lysate with SAR1 antibody at 0.1ug/ml. Predicted molecular weight: ~22 kDa.



IHC testing of FFPE human skin tissue with SAR1 antibody at 3.75ug/ml. Required HIER: steamed antigen retrieval with pH6 citrate buffer; AP-staining.



IHC testing of FFPE human small intestine tissue with SAR1 antibody at 3.75ug/ml. Required HIER: steamed antigen retrieval with pH6 citrate buffer; AP-staining.

Description

Additional name(s) for this target protein: SAR1 gene homolog A

Application Notes

Optimal dilution of the SAR1 antibody should be determined by the researcher.

Immunogen

Amino acids HSRLVESKVELNA from SAR1A were used as the immunogen for this SAR1 antibody.

Storage

Aliquot and store the SAR1 antibody at -20oC.