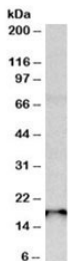


Sap30I Antibody (R35665)

Catalog No.	Formulation	Size
R35665-100UG	0.5 mg/ml in 1X TBS, pH7.3, with 0.5% BSA (US sourced) and 0.02% sodium azide	100 ug

[Bulk quote request](#)

Availability	1-3 business days
Species Reactivity	Human, Mouse, Rat
Predicted Reactivity	Dog
Format	Antigen affinity purified
Host	Goat
Clonality	Polyclonal (goat origin)
Isotype	Goat Ig
Purity	Antigen affinity
Gene ID	79685
Applications	Western Blot : 0.3-1ug/ml ELISA (peptide) LOD : 1:32000
Limitations	This Sap30I antibody is available for research use only.



Western blot testing of rat pancreas lysate with Sap30I antibody at 0.3g/ml. Predicted molecular weight: ~21kDa.

Description

Additional name(s) for this target protein: Sin3-associated protein p30-like, SAP30-like

Application Notes

Optimal dilution of the Sap30I antibody should be determined by the researcher.

Immunogen

Amino acids RLDQKSEGSKQLE were used as the immunogen for this Sap30I antibody.

Storage

Aliquot and store the Sap30I antibody at -20°C.