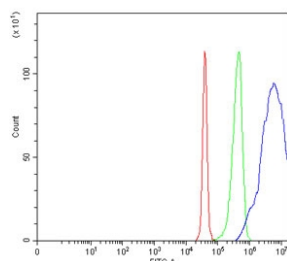


SAP30 Antibody / Sin3-associated polypeptide p30 (RQ7531)

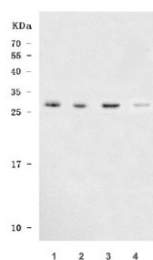
Catalog No.	Formulation	Size
RQ7531	0.5mg/ml if reconstituted with 0.2ml sterile DI water	100 ug

Bulk quote request

Availability	1-3 business days
Species Reactivity	Human
Format	Antigen affinity purified
Clonality	Polyclonal (rabbit origin)
Isotype	Rabbit IgG
Purity	Antigen affinity purified
Buffer	Lyophilized from 1X PBS with 2% Trehalose
UniProt	O75446
Applications	Western Blot : 0.5-1ug/ml Flow Cytometry : 1-3ug/million cells
Limitations	This SAP30 antibody is available for research use only.



Flow cytometry testing of human SiHa cells with SAP30 antibody at 1ug/million cells (blocked with goat sera); Red=cells alone, Green=isotype control, Blue= SAP30 antibody.



Western blot testing of human 1) HeLa, 2) 293T, 3) Jurkat and 4) A549 cell lysate with SAP30 antibody. Predicted molecular weight ~23 kDa, commonly observed at 23-30 kDa.

Description

Sin3A-associated protein, 30kDa, also known as SAP30, is a protein which in humans is encoded by the SAP30 gene. Histone acetylation plays a key role in the regulation of eukaryotic gene expression. Histone acetylation and deacetylation are catalyzed by multisubunit complexes. The protein encoded by this gene is a component of the histone deacetylase complex, which includes SIN3, SAP18, HDAC1, HDAC2, RbAp46, RbAp48, and other polypeptides. This complex is active in deacetylating core histone octamers, but inactive in deacetylating nucleosomal histones. A pseudogene of this gene is located on chromosome 3.

Application Notes

Optimal dilution of the SAP30 antibody should be determined by the researcher.

Immunogen

Amino acids YFIYSVKNDKNKSDLKVDSGVH from the human protein were used as the immunogen for the SAP30 antibody.

Storage

After reconstitution, the SAP30 antibody can be stored for up to one month at 4°C. For long-term, aliquot and store at -20°C. Avoid repeated freezing and thawing.