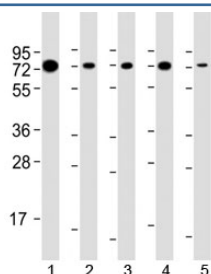


## SAM68 Antibody / KHDRBS1 (F53819)

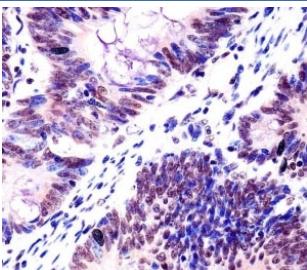
Catalog No.	Formulation	Size
F53819-0.2ML	In 1X PBS, pH 7.4, with 0.09% sodium azide	0.2 ml
F53819-0.05ML	In 1X PBS, pH 7.4, with 0.09% sodium azide	0.05 ml

[Bulk quote request](#)

<b>Availability</b>	1-3 business days
<b>Species Reactivity</b>	Human, Mouse
<b>Format</b>	Antigen affinity purified
<b>Host</b>	Rabbit
<b>Clonality</b>	Polyclonal (rabbit origin)
<b>Isotype</b>	Rabbit Ig
<b>Purity</b>	Antigen affinity
<b>UniProt</b>	Q07666
<b>Localization</b>	Nuclear
<b>Applications</b>	Western Blot : 1:1000-2000 IHC (FFPE) : 1:25
<b>Limitations</b>	This SAM68 antibody is available for research use only.



Western blot testing of human 1) Raji, 2) HeLa, 3) Daudi, 4) HT-29 and 5) mouse NIH3T3 cell lysate with SAM68 antibody at 1:2000. Predicted molecular weight 48 kDa but routinely observed at 62-68 kDa.



IHC testing of FFPE human colorectal carcinoma with SAM68 antibody at 1:25. HIER: steamed in pH6 citrate buffer.

## Description

Src associated in mitosis 68 kDa protein is recruited and tyrosine phosphorylated by several receptor systems, for example the T-cell, leptin and insulin receptors. Once phosphorylated, functions as an adapter protein in signal transduction cascades by binding to SH2 and SH3 domain- containing proteins. Role in G2-M progression in the cell cycle. Represses CBP-dependent transcriptional activation apparently by competing with other nuclear factors for binding to CBP. Also acts as a putative regulator of mRNA stability and/or translation rates and mediates mRNA nuclear export. Positively regulates the association of constitutive transport element (CTE)-containing mRNA with large polyribosomes and translation initiation. According to some authors, is not involved in the nucleocytoplasmic export of unspliced (CTE)-containing RNA species according to.

## Application Notes

Titration of the SAM68 antibody may be required due to differences in protocols and substrate sensitivity.

## Immunogen

A portion of amino acids 259-291 from the human protein was used as the immunogen for the SAM68 antibody.

## Storage

Aliquot the SAM68 antibody and store frozen at -20oC or colder. Avoid repeated freeze-thaw cycles.