

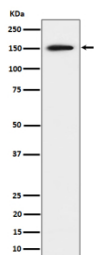
SAFB Antibody / Scaffold attachment factor B [clone 30S09] (FY12630)

Catalog No.	Formulation	Size
FY12630	Rabbit IgG in phosphate buffered saline, pH 7.4, 150mM NaCl, 0.02% sodium azide and 50% glycerol, 0.4-0.5mg/ml BSA	100 ul

Recombinant **RABBIT MONOCLONAL**

[Bulk quote request](#)

Availability	2-3 weeks
Species Reactivity	Human, Mouse, Rat
Format	Liquid
Host	Rabbit
Clonality	Recombinant Rabbit Monoclonal
Isotype	Rabbit IgG
Clone Name	30S09
Purity	Affinity-chromatography
Buffer	Rabbit IgG in phosphate buffered saline, pH 7.4, 150mM NaCl, 0.02% sodium azide and 50% glycerol, 0.4-0.5mg/ml BSA.
UniProt	Q15424
Applications	Western Blot : 1:500-1:2000 Immunohistochemistry : 1:50-1:200 Immunocytochemistry/Immunofluorescence : 1:50-1:200
Limitations	This SAFB antibody is available for research use only.



Western blot analysis of SAFB expression in human 293 cell lysate shows a strong band at ~150 kDa, higher than the predicted ~102 kDa, consistent with the phosphorylated and structurally disordered nature of the SAFB protein that causes slower migration on SDS-PAGE.

Description

SAFB antibody detects scaffold attachment factor B, a multifunctional nuclear protein encoded by the SAFB gene. SAFB

belongs to a family of proteins that bind scaffold/matrix attachment regions of DNA, thereby influencing chromatin structure and transcriptional regulation. It contains RNA recognition motifs and domains for protein-protein interactions, linking it to RNA processing, transcriptional repression, and nuclear architecture.

SAFB antibody is widely applied in molecular biology, transcriptional regulation, and cancer research. SAFB associates with nuclear matrix elements and modulates expression of hormone responsive genes. It also functions as a corepressor of estrogen receptor alpha, impacting signaling pathways critical in breast cancer biology. By detecting SAFB, researchers can explore mechanisms of gene regulation at the interface of DNA, RNA, and protein interactions.

Western blot assays detect SAFB protein in nuclear extracts, while immunohistochemistry maps expression in hormone responsive tissues and tumors. Immunofluorescence highlights nuclear speckle localization, consistent with its role in transcriptional complexes. These applications enable detailed characterization of SAFB across tissues and conditions.

SAFB also contributes to stress response pathways. It regulates heat shock protein gene expression and participates in apoptosis and cell cycle control. Mutations or altered expression of SAFB have been linked to breast cancer, prostate cancer, and neurological disorders. By applying SAFB antibody, scientists can evaluate its diverse functions in gene regulation, hormone signaling, and disease pathogenesis.

SAFB antibody from NSJ Bioreagents provides reliable specificity for analyzing nuclear scaffold interactions and transcriptional repression. Its performance across multiple assays ensures accurate results in both research and diagnostic contexts.

Application Notes

Optimal dilution of the SAFB antibody should be determined by the researcher.

Immunogen

A synthesized peptide derived from human SAFB was used as the immunogen for the SAFB antibody.

Storage

Store the SAFB antibody at -20oC.