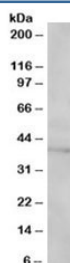


## SAE1 Antibody (R34751)

Catalog No.	Formulation	Size
R34751-100UG	0.5 mg/ml in 1X TBS, pH7.3, with 0.5% BSA (US sourced) and 0.02% sodium azide	100 ug

[Bulk quote request](#)

Availability	1-3 business days
Species Reactivity	Human
Predicted Reactivity	Cow, Dog
Format	Antigen affinity purified
Host	Goat
Clonality	Polyclonal (goat origin)
Isotype	Goat Ig
Purity	Antigen affinity
Gene ID	10055
Applications	Western Blot : 1-3ug/ml ELISA (peptide) LOD : 1:8000
Limitations	This SAE1 antibody is available for research use only.



Western blot testing of Jurkat lysate with SAE1 antibody at 1ug/ml. Predicted/observed molecular weight: ~40kDa.

### Description

Additional name(s) for this target protein: SUMO1 activating enzyme subunit 1, AOS1

### Application Notes

Optimal dilution of the SAE1 antibody should be determined by the researcher.

## **Immunogen**

Amino acids MKGNGIVECLGPK were used as the immunogen for this SAE1 antibody.

## **Storage**

Aliquot and store the SAE1 antibody at -20oC.