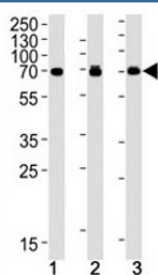


## S6K2 Antibody [clone 164CT21.2.2] (F40230)

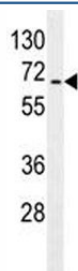
Catalog No.	Formulation	Size
F40230-0.4ML	In 1X PBS, pH 7.4, with 0.09% sodium azide	0.4 ml
F40230-0.08ML	In 1X PBS, pH 7.4, with 0.09% sodium azide	0.08 ml

[Bulk quote request](#)

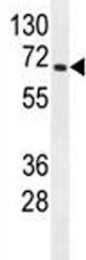
<b>Availability</b>	1-3 business days
<b>Species Reactivity</b>	Human, Mouse
<b>Format</b>	Purified
<b>Clonality</b>	Monoclonal (mouse origin)
<b>Isotype</b>	Mouse IgG1, k
<b>Clone Name</b>	164CT21.2.2
<b>Purity</b>	Purified
<b>UniProt</b>	Q9UBS0
<b>Applications</b>	Western Blot : 1:100-1:1000
<b>Limitations</b>	This S6K2 antibody is available for research use only.



S6K2 antibody western blot analysis in human (1) Jurkat, (2) MCF-7 and (3) mouse NIH3T3 cell lysate. Predicted molecular weight: 60-70 kDa



S6K2 antibody western blot analysis in Jurkat lysate



S6K2 antibody western blot analysis in mouse heart tissue lysate. Predicted molecular weight: 60-70 kDa

## Description

RPS6KB2 phosphorylates specifically ribosomal protein S6. [UniProt]

## Application Notes

Titration of the S6K2 antibody may be required due to differences in protocols and secondary/substrate sensitivity.

## Immunogen

This S6K2 antibody was produced from a mouse immunized with RPS6KB2 recombinant protein.

## Storage

Aliquot the S6K2 antibody and store frozen at -20°C or colder. Avoid repeated freeze-thaw cycles.