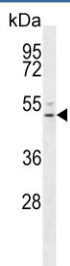


S1PR4 Antibody / EDG6 (F54842)

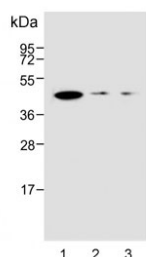
Catalog No.	Formulation	Size
F54842-0.4ML	In 1X PBS, pH 7.4, with 0.09% sodium azide	0.4 ml
F54842-0.08ML	In 1X PBS, pH 7.4, with 0.09% sodium azide	0.08 ml

[Bulk quote request](#)

Availability	1-3 business days
Species Reactivity	Human
Format	Purified
Host	Rabbit
Clonality	Polyclonal (rabbit origin)
Isotype	Rabbit Ig
Purity	Antigen affinity purified
UniProt	O95977
Applications	Western Blot : 1:500-1:1000
Limitations	This S1PR4 antibody is available for research use only.



Western blot testing of human NCI-H292 cell lysate with S1PR4 antibody. Predicted molecular weight ~42 kDa.



Western blot testing of human 1) HL60, 2) Jurkat and 3) HEK293 cell lysate with S1PR4 antibody. Predicted molecular weight ~42 kDa.

Description

EDG6 / S1PR4 is a member of the G protein-coupled receptors, as well as the EDG family of proteins. It participates in endothelial differentiation, and may regulate lymphocyte cell signaling. It is a member of the lysophospholipid/lysosphingolipid receptor family.

Application Notes

The stated application concentrations are suggested starting points. Titration of the S1PR4 antibody may be required due to differences in protocols and secondary/substrate sensitivity.

Immunogen

A portion of amino acids 8-37 from the human protein was used as the immunogen for the S1PR4 antibody.

Storage

Aliquot the S1PR4 antibody and store frozen at -20oC or colder. Avoid repeated freeze-thaw cycles.