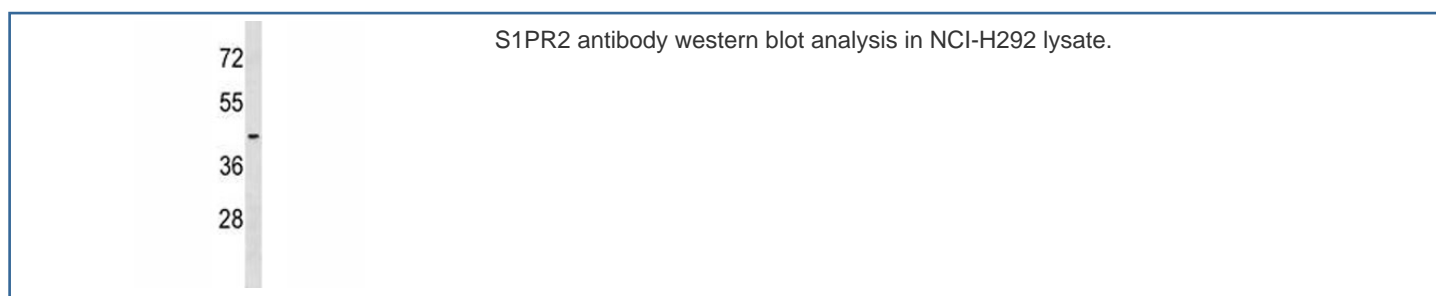


S1PR2 Antibody / EDG5 (F46905)

Catalog No.	Formulation	Size
F46905-0.4ML	In 1X PBS, pH 7.4, with 0.09% sodium azide	0.4 ml
F46905-0.08ML	In 1X PBS, pH 7.4, with 0.09% sodium azide	0.08 ml

[Bulk quote request](#)

Availability	1-3 business days
Species Reactivity	Human
Predicted Reactivity	Mouse, Rat
Format	Antigen affinity purified
Clonality	Polyclonal (rabbit origin)
Isotype	Rabbit Ig
Purity	Antigen affinity
UniProt	O95136
Applications	Western Blot : 1:1000
Limitations	This S1PR2 antibody is available for research use only.



Description

This gene encodes a member of the G protein-coupled receptors, as well as the EDG family of proteins. This protein participates in sphingosine 1-phosphate-induced cell proliferation, survival, and transcriptional activation

Application Notes

Titration of the S1PR2 antibody may be required due to differences in protocols and secondary/substrate sensitivity.

Immunogen

A portion of amino acids 272-298 from the human protein was used as the immunogen for this S1PR2 antibody.

Storage

Aliquot the S1PR2 antibody and store frozen at -20oC or colder. Avoid repeated freeze-thaw cycles.