

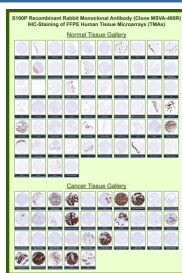
S100P Antibody for IHC / S100 Calcium Binding Protein P Immunohistochemistry Antibody [clone MSVA-480R] (V6110)

Catalog No.	Formulation	Size
V6110-100UG	Antibody in 1X PBS with 0.05% BSA, 0.05% sodium azide	100 ug
V6110-20UG	Antibody in 1X PBS with 0.05% BSA, 0.05% sodium azide	20 ug

Recombinant **RABBIT MONOCLONAL**

[Bulk quote request](#)

Species Reactivity	Human
Format	Purified
Host	Rabbit
Clonality	Recombinant Rabbit Monoclonal
Isotype	Rabbit IgG, kappa
Clone Name	MSVA-480R
UniProt	P25815
Localization	Cell projection, Cytoplasm, Microvillus membrane, Nucleus
Applications	Immunohistochemistry (FFPE) : 1:100-1:200
Limitations	This S100P/S100 calcium binding protein P antibody is available for research use only.



S100P Antibody for IHC Tissue Microarray (TMA). Immunohistochemistry analysis of S100 calcium binding protein P / S100P in formalin-fixed paraffin-embedded human normal and cancer tissue microarrays using recombinant rabbit monoclonal S100P antibody clone MSVA-480R. Tissue microarray (TMA) staining with HRP-DAB brown chromogen demonstrates cytoplasmic localization in epithelial cell populations, with prominent signal in glandular tissues, while most stromal and lymphoid elements remain largely negative. This distribution is consistent with the known expression pattern of S100P in epithelial-derived cells and tumors. Evaluation across the TMA panel enables direct comparison of S100P expression across diverse tissue types under standardized staining conditions. The observed immunohistochemistry staining profiles align with reported S100P expression data in the Human Protein Atlas.

Description

S100 calcium binding protein P (S100P) is a member of the S100 family of EF-hand calcium-binding proteins encoded by the S100P gene and expressed in a variety of epithelial tissues. S100P Antibody for IHC enables visualization of S100 Calcium Binding Protein P expression in formalin-fixed paraffin-embedded tissue sections using immunohistochemistry.

S100P participates in calcium-dependent signaling pathways that regulate cellular proliferation, migration, and survival, and it has been studied extensively in epithelial biology and tumor-associated signaling processes.

Immunohistochemistry studies commonly demonstrate cytoplasmic and occasionally nuclear S100P staining within epithelial cell populations. In histological tissue sections, S100P expression is frequently observed in glandular epithelial cells and in epithelial-derived tumors, allowing investigators to visualize S100P-positive epithelial cells within intact tissue architecture. These staining patterns enable evaluation of cellular localization and comparison of S100P expression across different tissues using immunohistochemistry-based analysis.

Large-scale expression profiling using human tissue microarray (TMA) panels provides an efficient approach for evaluating S100P distribution across many tissue types simultaneously. In human tissue microarray panels containing multiple normal and cancer tissues, S100P staining is commonly observed in epithelial compartments while surrounding stromal tissues often remain negative. Such TMA-based immunohistochemistry analysis allows investigators to examine patterns of S100P expression across numerous tissues under standardized staining conditions while preserving histological context.

S100P has also attracted considerable attention in pathology research because S100P-positive pancreatic ductal adenocarcinoma cells are frequently observed in tumor tissue sections. This pathology-associated expression pattern has led to the use of S100P immunohistochemistry as a marker studied in pancreatic cancer biology and epithelial tumor progression. Detection of S100P expression in tissue sections therefore provides insight into epithelial cell differentiation and tumor-associated signaling pathways.

A recombinant rabbit monoclonal antibody, clone MSVA-480R, recognizes S100P protein and supports immunohistochemical detection of S100 Calcium Binding Protein P in human tissues. When applied to FFPE tissue sections and human tissue microarray (TMA) panels containing multiple normal and cancer tissues, S100P Antibody for IHC highlights epithelial cell populations expressing S100P. These staining patterns allow researchers to evaluate tissue-specific expression, examine epithelial cell distribution, and study the role of S100P in epithelial biology and tumor-associated signaling pathways.

This antibody is also part of a broader collection of [IHC antibodies validated by tissue microarray analysis](#), supporting consistent staining across normal and cancer tissues.

Application Notes

1. Optimal dilution of the S100P Antibody for IHC / S100 Calcium Binding Protein P Immunohistochemistry Antibody should be determined by the researcher.
2. This S100P/S100 calcium binding protein P antibody is recombinantly produced by expression in human HEK293 cells.
3. Manual Protocol: Freshly cut sections should be used (less than 10 days between cutting and staining). Heat-induced antigen retrieval for 5 minutes in an autoclave at 121°C in pH 7.8 Target Retrieval Solution buffer. Apply the antibody at a dilution of 1:150 at 37°C for 60 minutes. Visualization of bound antibody by the EnVision Kit (Dako, Agilent) according to the manufacturer's directions.

Immunogen

A recombinant fragment corresponding to C-terminal of human S100P protein was used as the immunogen for the S100P Antibody for IHC.

Storage

S100P/S100 calcium binding protein P antibody with sodium azide - store at 2 to 8°C; antibody without sodium azide - store at -20 to -80°C.

Alternate Names

S100 calcium binding protein P antibody, S100P protein antibody, S100P calcium-binding protein antibody, S100P antigen antibody