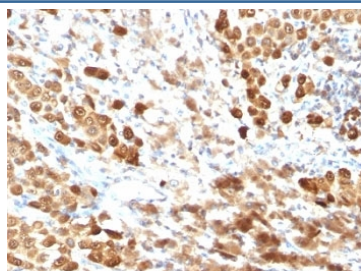


S100B Antibody [clone SPM354] (V3419)

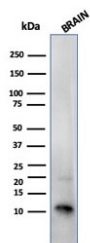
Catalog No.	Formulation	Size
V3419-100UG	0.2 mg/ml in 1X PBS with 0.1 mg/ml BSA (US sourced) and 0.05% sodium azide	100 ug
V3419-20UG	0.2 mg/ml in 1X PBS with 0.1 mg/ml BSA (US sourced) and 0.05% sodium azide	20 ug
V3419SAF-100UG	1 mg/ml in 1X PBS; BSA free, sodium azide free	100 ug

[Bulk quote request](#)

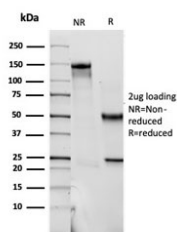
Availability	1-3 business days
Species Reactivity	Human
Format	Purified
Host	Mouse
Clonality	Monoclonal (mouse origin)
Isotype	Mouse IgG2a, kappa
Clone Name	SPM354
Purity	Protein G affinity chromatography
UniProt	P04271
Localization	Cytoplasmic, nuclear
Applications	Western Blot : 1-2ug/ml Immunofluorescence : 1-2ug/ml Immunohistochemistry (FFPE) : 1-2ug/ml for 30 min at RT
Limitations	This S100B antibody is available for research use only.



IHC testing of FFPE human melanoma with S100B antibody (clone SPM354). Required HIER: boil tissue sections in pH 9 10mM Tris with 1mM EDTA for 10-20 min followed by cooling at RT for 20 min.



Western blot testing of human brain tissue lysate with S100B antibody (clone SPM354).
Predicted molecular weight ~11 kDa.



SDS-PAGE analysis of purified, BSA-free S100B antibody (clone SPM354) as confirmation of integrity and purity.

Description

S100 belongs to the family of calcium binding proteins. S100A and S100B proteins are two members of the S100 family. S100A is composed of an alpha and a beta chain whereas S100B is composed of two beta chains. This antibody is specific against an epitope located on the beta-chain (i.e. in S-100A and S-100B) but not on the alpha-chain of S-100 (i.e. in S-100A and S100A0). This antibody can be used to localize S-100A and S-100B in various tissue sections. S-100 protein has been found in normal melanocytes, Langerhans cells, histiocytes, chondrocytes, lipocytes, skeletal and cardiac muscle, Schwann cells, epithelial and myoepithelial cells of the breast, salivary and sweat glands, as well as in glial cells. Neoplasms derived from these cells also express S-100 protein, albeit non-uniformly. A large number of well-differentiated tumors of the salivary gland, adipose and cartilaginous tissue, and Schwann cell-derived tumors express S-100 protein. Almost all malignant melanomas and cases of histiocytosis X are positive for S-100 protein.

Application Notes

The optimal dilution of the S100B antibody for each application should be determined by the researcher.

Immunogen

Purified bovine brain S100 protein was used as the immunogen for this S100B antibody.

Storage

Store the S100B antibody at 2-8°C (with azide) or aliquot and store at -20°C or colder (without azide).