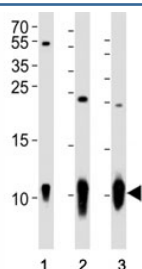


S100B Antibody (F49008)

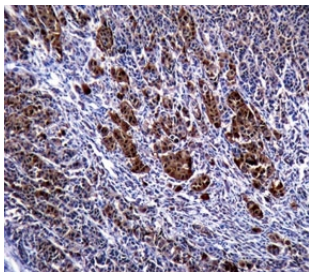
Catalog No.	Formulation	Size
F49008-0.4ML	In 1X PBS, pH 7.4, with 0.09% sodium azide	0.4 ml
F49008-0.08ML	In 1X PBS, pH 7.4, with 0.09% sodium azide	0.08 ml

[Bulk quote request](#)

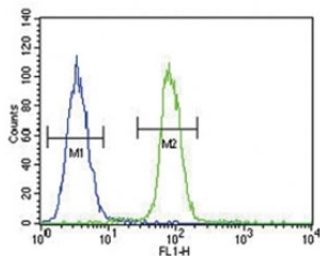
Availability	1-3 business days
Species Reactivity	Human, Mouse
Predicted Reactivity	Rabbit
Format	Antigen affinity purified
Host	Rabbit
Clonality	Polyclonal (rabbit origin)
Isotype	Rabbit Ig
Purity	Antigen affinity
UniProt	P04271
Localization	Cytoplasmic, nuclear
Applications	Western Blot : 1:1000 IHC (Paraffin) : 1:10-1:50 Flow Cytometry : 1:10-1:50
Limitations	This S100B antibody is available for research use only.



Western blot analysis of lysate from (1) A431 cell line, (2) mouse brain and (3) rat brain tissue using S100B antibody at 1:1000. Predicted size: 11 kDa with a 21 kDa homodimer



S100B antibody immunohistochemistry analysis in formalin fixed and paraffin embedded human malignant melanoma.



S100B antibody flow cytometric analysis of A375 cells (right histogram) compared to a negative control (left histogram). FITC-conjugated goat-anti-rabbit secondary Ab was used for the analysis.

Description

S100B is a member of the S100 family of proteins containing 2 EF-hand calcium-binding motifs. S100 proteins are localized in the cytoplasm and/or nucleus of a wide range of cells, and involved in the regulation of a number of cellular processes such as cell cycle progression and differentiation. S100 genes include at least 13 members which are located as a cluster on chromosome 1q21; however, this gene is located at 21q22.3. This protein may function in Neurite extension, proliferation of melanoma cells, stimulation of Ca^{2+} fluxes, inhibition of PKC-mediated phosphorylation, astrocytosis and axonal proliferation, and inhibition of microtubule assembly. Chromosomal rearrangements and altered expression of this gene have been implicated in several neurological, neoplastic, and other types of diseases, including Alzheimer's disease, Down's syndrome, epilepsy, amyotrophic lateral sclerosis, melanoma, and type I diabetes.

Application Notes

Titration of the S100B antibody may be required due to differences in protocols and secondary/substrate sensitivity.

Immunogen

This S100B antibody was produced from rabbits immunized with S100B recombinant protein.

Storage

Aliquot the S100B antibody and store frozen at -20°C or colder. Avoid repeated freeze-thaw cycles.